

ALUMNI NEWSLETTER

Alumni Issue - Western Maryland College Bulletin January 1956

ALUMNI NEWSLETTER - A newsletter instead of the regular Alumni Issue of the College Bulletin may have some alumni wondering what happened to the old "12-pager". To be frank about it, we're experimenting with the idea of supplementing the 4 Alumni Issues of the Bulletin with this type of news carrier. Using this one as a trial, we'd like to have your reaction. Drop us a line at the Alumni Office.

ENROLLMENT STUDY - Colleges and universities across the country have been told that by 1960 enrollments will have risen to 4 million students; they are now about 2 million - by 1970 - 6 million. With our present plant facilities (including building plans for the next 3-4 years - Student Union, Chapel, etc.) we can accomodate 700 students comfortably. . . Last year, a Faculty-Trustee Policy Committee studied the problem. The result - a recommendation to limit enrollment to 700, at least for the next 5 years. To increase beyond this point would mean building additional facilities: classrooms, dormitories, larger library, gymnasiums, playing fields etc. To do this would require a tremendous capital outlay, funds for which are just not available. Besides, the College feels that a large increase would force us to lose some of the advantages we now enjoy. . . In 5 years, the Committee will review the problem. In the meantime, WMC will have a cushion area of a 50 student expansion potential over the present enrollment. . . Only during the early post World War II era did our enrollment reach a figure higher than 700. This was under very crowded emergency conditions when most of the colleges and universities opened their doors to veterans under the first G.I. Bill.

NEW RECOGNITION AND PENALTY SYSTEM - A system of recognition and penalties based on campus citizenship was initiated this year. It is administered by the Deans of Men and Women and Student Gov't. It is felt that recognition should be given students for outstanding contributions to the campus community; in the classroom or campus and dorm living. To be on the Deans' List of Campus Citizens students must do good work in both areas, though need be outstanding in only one. Factors considered include: satisfactory record in scholarship, absences, dorm life, (Continued on next page)

an affirmative attitude toward the cultural, athletic and organizational program of the college. Lists are revised each semester. People on the List have campus and absence privileges. . . Fines and suspension from college are abolished. Administrative Warnings are issued instead. Three in one year or total of seven means being dropped from college. Warnings do not remove the possibility of expulsion nor eliminate special treatment for petty offenses. The purpose is to bring together offenses into organized patterns of a cumulative nature without penalty for a chance misstep, but with serious consequences for persistent and flagrant bad citizenship on campus.

BUILDING PROGRAM CONTINUES - Noises coming in the back window of the Alumni Office signify that the Military Building, Old Yingling Gym, is coming down. The building was vacated during Christmas recess. The ROTC officers have moved into new quarters in MacLea Hall. Classrooms and supply room are in ANW Hall. The razing of this building is the first step in the planned building program which begins with the construction of the Baker Memorial Chapel.

ART EXHIBITS - If you ever drive to the campus on a pleasant Sunday for a look around, be sure to take time to look in at the art show in Old Main. The exhibit room is just inside the main entrance, directly above the post office. There is always fine art exhibited. A joint show of paintings and drawings by Leonard and Florence Bahr will be displayed Feb. 8-29. Mr. Bahr is a Maryland Institute instructor. The March 7-24 show will be the work of Dr. Joseph Falzone. Paintings, drawings and collages of William Waller will be shown April 4-25. Mr. Waller has served as director at the Art Academy, Montmart. . . The January show was made up of a gift collection of 65 masks, both death masks and castings made from life, given to the college by Dr. Henry C. McComas A life-long friend of Dr. McComas, Philip Myers, '16, was instrumental in seeing that the collection was given to the college. The collection, made over a 50 year period, includes masks of some of the world's really great people.

WESTERN MARYLAND COLLEGE BULLETIN
Vol. XXXVII January Number 1

Western Maryland College Bulletin, Westminster, Maryland, published monthly during the school year from January to November and July-August, except May, June and September, by the College. Entered as second class matter, May 19, 1921, at the Post Office at Westminster, Md., under the act of August 24, 1912. Accepted for mailing at special rate of postage provided for in section 1103, act of October 3, 1917.

FORD FOUNDATION - In the last bulletin we told you that the College had received \$181,900 from the Ford Foundation. Half of the sum will be received this July; the remainder in July of 1957. The money is for endowment exclusively; income from which is to be used for faculty salary increases. . . After ten years, the college may use the corpus as it wishes.

CHOIR CONCERT - The January concert with the Baltimore Symphony Orchestra drew plaudits from all critics. Quoting George Kent Bellows, music critic for the Baltimore Evening Sun: "The honors of the evening easily went to the splendid chorus of the Western Maryland College, which Alfred deLong had trained admirably to sing clearly, cleanly with absolute pitch and precision, and flawless diction. And the seven little girls who were in the Can-Can line at Maxim's Paris cafe were in themselves worth the price of admission." . . Mr. deLong has already begun work on the Spring Concert which might go "on the road" to certain school areas if finances can be arranged. Alumni and friends can plan to hear the performance during the Commencement Weekend, June 1-4.

PARIS GIFT - Two beautiful books were received by Miss Margaret Snader, French professor here, gifts from Monique Thiaude's father. Monique is a charming Parisienne who studied here last year. Her father is a well-known philatelist and friend of Gen. Robert J. Gill. The books are Nathan Encyclopedia of French Literature and French Society Through The Ages. Monique's father asks that they be inscribed: These books are to be used by French students and people interested in French in memory of the happiest year in Monique's life.

'55 GRAD CITED - Lt. Larry Crist of Silver Spring, Maryland., a member of the June '55 graduating class, has received a letter of commendation for outstanding academic achievement from Brig. Gen. Robert L. Cook, assistant commandant of the Infantry School at Fort Benning. Larry was second highest in his class of 404 basic Infantry officers at Benning.

HARLOW HONORED - Not only is Dick Harlow a prominent football man, but one of the most outstanding ornithologists in the country. He recently was elected an honorary life member of the Academy of Natural Sciences (Philadelphia) of the Delaware Valley Ornithological Club.

WINTER SPORTS - With mid-year exams over, our teams are swinging back into the second half of their schedules. Our basketball team has posted only 2 wins in 12 starts despite the fact that senior Hugh McIntyre ranks 46th in the nation with a 22 point average per game. . . The wrestling team is having its best season in several years with 3 wins and 1 loss. Brant Vitek has 4 straight "pins" to his credit. Brooks Euler and Ken Day have decisioned their opponents in every match while senior Andy Tafuri has three straight. Not one conference match has been dropped. . . Sfc. Sawacki's rifle team has won 3 and lost 3 "shoulder to shoulder matches"; with no wins in "postal matches." INDICATIONS ARE that this is a "coming team" which will develop into a tough one to beat next year.

Western Maryland College
BULLETIN
Westminster, Maryland

Entered at the Post-Office, Westminster, Md. as second class matter May 19, 1921, under the act of Congress of August 24, 1912.

Mrs. Margaret Reindollar Neidermy
120 W. Miner St.
West Chester, Pa.

Form 3579 (Rev. 6-23)

UNDELIVERABLE SECOND-CLASS

☐ Removed—Left no address.

☐ No such number

☐ Not found

REMOVED TO THE FOLLOWING NEW

(Sheet and number)

(Post Office and zone)

(State)

16-26232

Alumni Issue

Western Maryland College Bulletin
April, 1956





COVER STORY

Standing within the shadow of the crumbling wall of Old Yingling Gym, five gentlemen can be seen studying the plans and site of the proposed Baker Memorial Chapel.

In the foreground on opposite sides of President Ensor are Hubert P. Burdette, '20, and D. Carlyle MacLea, '22. Both alumni are members of the College Trustees Buildings and Grounds Committee.

The twosome to the right are the college architects, Adams and Rigg.

Not long after this picture was taken, the wall was scooped away, and all that remained of Yingling Gym was a gaping hole. Earlier, McKinstry Hall had been leveled.

Other buildings in the background are Smith Hall showing the side where McKinstry joined it—and Old Main.

Western Maryland College Bulletin

Vol. XXXVII April Number 4

Western Maryland College Bulletin, Westminster, Maryland, published monthly during the school year from January to November and July-August, except May, June and September, by the College.

Entered as second class matter, May 10, 1921, at the Postoffice at Westminster, Md., under the act of August 24, 1912. Accepted for mailing at special rate of postage provided for in section 1103, act of October 3, 1917.

W. M. C. ALUMNI ASSOCIATION
Member of
American Alumni Council

Letter From The Editor

Some confusion resulted from our first attempt with an Alumni Newsletter which you received as the January Alumni Issue of the College Bulletin.

To clear the atmosphere for others who may have been in doubt, a word of explanation might be helpful.

Our purpose in sending the Alumni Newsletter was experimental. True, it was used as one of our four Alumni Issues—January. For some time we have been thinking of supplementing (adding to) the four Alumni Issues of the Bulletin with a periodic Newsletter. To do this on a permanent basis would have required us to apply for an additional mailing permit. Of course, we did not want to go to this expense for what possibly might have been a dead-end. So, we used the January Alumni Issue mailing frequency permit for the experiment.

From the comments of alumni who took the time to write to us, we presume that not a few of you also are misled by the small print which appears regularly in the lower left hand corner on page 2 of the Alumni Issue—(Western Maryland College Bulletin, Westminster, Maryland, published monthly during the school year from January to November and July-August, except May, etc.).

Alumni receive only four issues of a series of seven, known collectively, as the Western Maryland College Bulletin. The four publications you receive are titled—Alumni Issue—published in January, April, July-August and November. Other editions of the Western Maryland College Bulletin which fall within the same postal mailing permit include the Summer and Annual College Catalogues and one other special purpose publication, none of which are received by alumni—except upon request.

Most of your letters, however, led us to believe that a Newsletter occasionally sandwiched in between the four Alumni Issues of the College Bulletin would be welcomed.

With the one we did in January, we have found that it is easy and economical to write, print and mail. If used in the future, it will not be a substitute for the regular Alumni Issue.

Our idea in using a Newsletter is to bring you more information about the College, more frequently but at the same time as economically as possible. We have no subscription for the Alumni Issue; the College finances its printing and mailing.



Winter on the Hill this year has been cold and snowy. But long before the last snows disappeared, the College maintenance crew under the supervision of Ed Black, Superintendent of Buildings and Grounds, began the job of dismantling Yingling Gym and McKinstry Hall.

This activity has required considerably more planning than one would think necessary for the job at hand. Arrangements had to be made to re-locate some of the vital subterranean plumbing and other equipment which are planned to serve the college needs after the halls are gone.

The first evidence of this was the re-location of a huge hot water storage tank nestled in the basement of Yingling Gym. Anyone looking for it now, will find it trussed up in an abandoned dungeon in the lower reaches of Hering Hall; an ideal resting place for the 1000 gallon monster. However, it was no small feat of engineering to move the huge tank from its original site.

The steam line which threads its way under the sod in front of the old gymnasium and other pipes which emerge from Smith Hall, must also be dug up and re-located before the foundation for the chapel can start.

When the spring thaw completes its cycle, big equipment will be moved in to finish the job Mr. Black's men started weeks ago.

The original Yingling Gymnasium, according to the late Dr. George S. Wills' History of Western Maryland College, was built in 1889. It was named for Miss Anna R. Yingling (of the class of 1871). In the same year, 1889, the President's House was built.

THE CHANGING FACE OF THE HILL

In 1904, the gym was renovated for use as a science building and continued to be used as such until it was razed to clear the space for Lewis Hall. It is interesting to note that as far back as fifty years ago, buildings were razed to make space for other buildings. The same year it was razed, the new gymnasium was erected in the rear of the Main building.

McKinstry Hall was originally built as a wing to Smith Hall in 1889. Later, in 1907 the wing was extended and the whole named McKinstry Hall, in memory of Mamie M. McKinstry, of the class of 1897, who provided in her will that "the College should have a bequest from her estate."

At this point, Yingling Gym and McKinstry Hall are skeleton buildings. Doors and windows are gone, flooring has been ripped up and dead electricity wires are hanging like draping vines from the rafters. All salvageable material has been removed.

Cranes will remove the roofs, a clam shovel will knock down the brick walls as trucks haul off the rubble. By the time you read this, they may be leveled.

When the way is clear, big earth moving equipment will move in to slice off two or three feet from the top of the Hill before the footings for the Chapel are poured.

Old Ward will probably be razed this summer.

One pleasant outcome beside the

prospect of the beautiful new chapel is the commodious quarters the Military Department has acquired in the basement of the two men's dormitories.

Administrative offices are located in the basement of the new Mac-Lea Hall.

In Albert Norman Ward Hall, now jokingly referred to by students as "Old Ward", is a very excellent armory, classroom, projection and supply rooms.

The Supply Room custodian, Archie Algire, has nothing but the highest praise for it. And he should know.

He trained here as an ROTC student and graduated in 1938 as a Reserve Officer. Since then he has come back to the Military Department, worked in "Old Yingling" and is now as happy about the new location as his smile implies.





The Spring House

The face of the campus is changing, but the old Spring House that was once a part of the Geiman farm is still very much in use.

The Geiman farm was purchased by the College in 1920, part of it being Hoffa Field now. During the past year the 200 year old farm house has been razed, but the Biology department has taken the Spring House as a special project. It is now completely cleaned, painted inside and out, window paned and locked against both vandals and playing children.

It really is just one large room with several wells of water and an open hearth. The large hooks from the ceiling remind one that 50 years ago the house was used for butchering and storage. The Geimans say that the hooks were usually hung with beef and pork for winter storage, and, of course, the wells of water fed by a natural spring cooled each day's milk.

Now it is only occasionally that students go to the Spring House.

The water tanks are excellent storage places for the shipments of animal life which the Biology de-

partment needs during semesters of lab work.

The renovation of this house was done by the college Bete Beta Beta Chapter. This is only one of the many activities for which the Western Md. Alpha Mu Chapter placed second in the Northeastern Regional Conference of the Beta Beta Beta last year. Dr. H. P. Sturdivant, head of the Biology department, is the Regional Vice-Presi-

dent of this national society.

In the late 40's two Western Md. students won honors from the national Tri Beta. *Marie Wilson '46* and *J. Shermer Garrison, '49* won the Frank Brook's Research Award for the best piece of research work done by a student. This year, Kay Holt, a senior student, will give her honors paper in the hopes of bringing this award back to a Western Marylander.



New Faculty



Mrs. Marcia Hovey joined members of the faculty, and Rev. Paul Helm and Mrs. S. B. Schofield resumed their teaching positions here at the beginning of the second semester.

Mrs. Hovey is instructing a class in Newspaper Management and Makeup, and teaching a course in Freshman English. Originally from Warren, Pa., she received her A. B. degree from Alleghany College, and M. A. from the University of Pennsylvania. She has held editorial positions with the American Philosophical Society and the Curtis Publishing Co.

She is the wife of Dr. Richard B. Hovey, assistant professor of English here. Rev. Helm, assistant professor of Sociology, returned after an absence of one semester.

Mrs. Schofield is again instructing in the Home Economics Department.

Great Books

Western Maryland Library has been selected to receive one of the 1600 sets of *Great Books of the Western World* being distributed through a selection committee of The American Library Association under a grant from the Old Dominion Foundation.

The celebrated 54 volume work, including the unique idea-index, the Synopticon, was produced by Encyclopedia Britannica in collaboration with the University of Chicago. To assure that an adequate cross-section of universities, colleges, and public libraries possessed the set, the Old Dominion Foundation advanced a sum sufficient to distribute 1600 sets and invited the American Library Association to serve as the agency of selection and distribution.

The set contains 54 volumes encompassing 443 works by 74 authors spanning Western thought from Homer and the Bible to the 20th Century.

Alumni Files

During the past months the Alumni Office has set up a new address system and file. In order that the files can be of value for every purpose, including reunion and class listings, the address plates include the maiden name of all alumnae. The class is also designated. It is hoped that anyone wanting a name other than that shown will send the correction to the Alumni Office.

Also, the files are tabbed so that, in the case of a husband and wife, only the husband will receive the mail. It is of course meant for both, but done as an economy measure.

Club Notes

Carroll County Picnic

Sat. May 19, 4 p.m.

Harvey Stone Park

Soft Drinks at Grounds—Softball

Make it a family party

New York Metropolitan Club

Chinatown Tour and Dinner

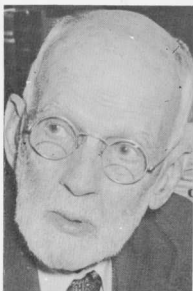
Fri. May 18, 6:30 p.m.

True Light Church

195 Worth St., Chinatown

PROGRAM OF EVENTS — Alumni & Commencement Weekend June 1-4

JUNE 1— 8:15 P.M.	College Players "The Grass Harp"	Alumni Hall
JUNE 2— 1:00 P.M.	3rd Annual Alumni Golf Tournament	Gill Gym
3:30 P.M.	Dedication of Daniel MacLea Hall as a Men's Dormitory	
4:30 P.M.	Alumni Reception	McDaniel Lounge
6:00 P.M.	Reunion Class Procession Forms	McDaniel Lounge
6:30 P.M.	Annual Alumni Banquet	College Dining Hall
JUNE 3—10:30 A.M.	Baccalaureate — President Ensor	Alumni Hall
4:00 P.M.	College Choir — Secular Program	Alumni Hall
JUNE 4—10:00 A.M.	86th Annual Commencement	Alumni Hall
	Dr. D. Wilbur Devilbiss, Speaker	
	President, State Teachers College, Salisbury, Md.	



George Stockton Wills

Dr. Wills is gone. The familiar figure, the whitening beard, the capeworn overcoat, the curving pipe, the courtly manners, the dignified but warm wisdom, have typified for college students of more than half a century not only Western Maryland but culture, refinement, and the best values education has to offer.

Though the College has been served by many loyal and skilled teachers, it may well be that more students knew, respected, and loved Dr. Wills than any other. This was partially because of his distinctive appearance, but mostly because of his extraordinary personal charm and impressiveness.

What was sensed by a smaller group but with much more intensity was that Dr. Wills was a great teacher. He had limitations, of course: he was an excellent teacher of exposition but always asserted that imaginative writing was not his forte; he rarely displayed wit, though he had a tremendous stock of illustrative anecdotes. His shortcomings were few, however, and his positive qualities have seldom been equalled. His scholarship was broad, solid, and unceasing; at the age of 80 he still worked out fresh notes for each meeting of courses he had taught many times before. His approach to literature was di-

rected toward moral, philosophic, and religious values; his knowledge of classical and Biblical literature was exhaustive. In the classroom he had great dignity and authority; there was little laughter and no joking in his courses, but an enormous sense of intellectual and moral stimulation. He was uncompromising where principles were involved. His extraordinary social warmth and affability were most evident in counseling: students sought him out continually for advice on subjects from dating to religious conviction, and they were never disappointed; his ability at the age of nearly 90 to interest and hold the attention of college students almost passes understanding. No man ever accepted more completely or conscientiously the total responsibilities of being a teacher.

Dr. Wills, like Western Maryland College, came out of a Methodist Protestant background. He was born in 1866, five months before the cornerstone of Old Main was laid. He knew all five of the presidents of the College and worked under four of them. In September, 1898, he taught his first classes for the College; in the summer of 1950, at the age of 84, he taught a full schedule for the last time; in the spring of 1954 he led a meeting of the English honors seminar, his last regular teaching for Western Maryland. He continued to attend faculty gatherings, to participate in activities of the fraternity of which he was a member and sponsor and to attend concerts until January of 1956. The photograph of the English Department, taken in his home for the 1956 *Aloha*, represents his last function as a

member of the staff of Western Maryland College. His life so closely parallels that of the College and has been for so long intertwined with it that his death seems to mark the end of an era.

He will not be forgotten. Many books from his extensive and extraordinary collection have been given to the college. But his memory is insured by neither a shelf of books nor by a portrait in the library: it is insured by the love and respect of thousands of Western Marylanders who studied under him. Great teachers are rare enough to be remembered, and Dr. Wills was a great teacher.

John D. Makosky
Dean of the Faculty
—From Gold Bug



Dr. Wills died February 27 in Baltimore. He is buried in Druid Ridge Cemetery, Pikesville, Md.

Dr. Ensor has announced that there will be a Wills Memorial Seminar Room in Science Hall, in memory of Dr. Wills as English Department Head. The Wills family has given most of his library to the College; the major part will be housed in the Wills Room, the remainder in the college library.

The Wills Room will be used by the English Seminar and honors groups.

Many friends and alumni have already asked President Ensor if they may make some tangible contribution toward any plans to commemorate the memory and work of Dr. Wills. The president invites all who wish to send their checks to the College, designating them for the Wills Memorial Room.

Personals from Alumni

If a poll were taken to determine what section of the bulletin alumni turn to first, our guess would be this column. This surmise is based on what alumni tell us.

Sources which supply copy for the alumni personals column are many—newspaper clippings, magazine articles, business firms, armed service home-town news bureaus, other alumni offices, by word of mouth, but most important—letters from alumni.

Comment has been made that news of the more recent classes fills the majority of space allotted to alumni personals. It is not our intention to disregard news of alumni in the older classes. We urge all of you to write to us. Send news of yourself and classmates. We will use it.

1953
Mrs. Gertrude Yeasey Strayer died on March 8 and was interred at Pocomoke.

1950
Mrs. Helen Goresch Caldwell has moved from Frostburg to the Maryland Masonic Home in Cockeysville.

1953
Miss Eva Herr died in Westminster on January 17.

1946
Reunion will be held this year.
Roger J. Whiteford was the recipient of the 1955 Distinguished Service Award of the District of Columbia Bar Association in December. He has been a member of the District Bar for 42 years and received the award for "outstanding service to the people of the District of Columbia."

1952
Chandler Sprague, former Baltimore and Los Angeles newspaper reporter and Hollywood script writer, died last November in Sacramento, Cal.

1957
John Charles Beck passed away in November in York, Pa., after an illness of several years. He is survived by Mary Lee Melville Beck.

1929
Engaged: Edith T. Fenby, '32, to John S. Bubel of Phoenixville, Pa. Her father and mother, Mr. and Mrs. Jonathan Fenby announced the engagement last November.

1927
Mr. and Mrs. John Arthur Speicher (Margdalena Lawson) are living at 222 Potomac Heights Ave., Hagerstown. . . John H. A. Lawson died last May of a stroke in Baltimore.

1933
Wilson H. Murray died in December at his home in Baltimore of a heart condition. He was publisher of the Beverage Journal of Maryland, Washington and Delaware; is survived by his wife, (Catherine Rose, '35) and four children.

1934
Roland E. Sliker is a Colonel in the United States Air Force and is living in Upper Marlboro, Md. . . Word from C. Lease Bussard tells of meeting "Chuck" Caddy in St. Louis. Chuck is working for an Atomic Energy Commission Equipment Company out of New York; travels all over the world.

1935
Mrs. Gordon Lockard (Thelma Yohn) is teaching health and physical education at Franklin H. S., Reisterstown. Also coaching varsity and J.V. basketball teams, and is living in a newly built home at 21 Chestnut Ave.

1936
Reunion will be held this year.
Dr. Elizabeth F. Hagan is co-author of a book, "Measurement and Evaluation in Psychology and Education" published by John Wiley and Sons. She is a member of Teachers College faculty, N. Y. C., and has written numerous journal articles. . . Born to Mr. and Mrs. Vincent P. McDonald (Zaida McKenzie) their fifth child, Vincent McDonald, Dec. 22, in Stony Creek, Conn.; others are 2 boys and 2 girls. . . Married: Helen Stamp Neal and Emory E. Hoffman in Hampstead Methodist Church last December.

1937
Lt. Elizabeth J. Harrison, N.Y.E. USN, is now stationed in Monterey, Calif. at the U. S. N. post-graduate school where she is in charge of WAVES, teaches and has administrative duty.

A. B. Wilson was promoted to claims examiner in the Annapolis regional office of the Nationwide Insurance Co. in February.

1940
Ruthetta Lippy is at present School Lunch Supervisor in Montgomery County and last fall was elected President of the Maryland School Food Service Association.

1941
Reunion will be held this year.
Born to Dr. and Mrs. William H. Adolph (Margaret Reynolds, '42) a son, in February.

1943
The Rev. Lester K. Welch is a tour director for European Traveling Seminar this year open to students, teachers and older people of any vocation. He will be gone June 15 to Aug. 19. . . Major William O. Prettyman, Regular Army, has been in service since graduation, is married and has two sons and is stationed in Washington, D. C. . . Mrs. Allan Fox (Hazel Metz) is doing research in foods and teaching at the University of Nebraska. . . Born to Dr. and Mrs. Clarence McWilliams (Nellie Jean Eckhardt) a son, Ross Benson, in October.

1944
Andrew, "Andy" R. (En Tao) Chi has been working for the past two and a half years at the Signal Corps Laboratories, Fort Monmouth, and is the author of "Effects of Inquiries on the Resonator and Lattice Properties of Quartz." . . Born to Mr. and Mrs. Robert J. Wirth (Emily Billingslea) a son, Timothy Leith, on December 14.

1945
Mr. and Mrs. A. Morris Todd, Jr. (Mary Elizabeth Ober) are vegetable farmers; they have two sons, Michael and Mark. . . Mrs. Mabel Gilton Miller and her husband are Methodist missionaries now in Southern Rhodesia, where they have lived since 1953. Address them: Mrewa Mission, c/o Mrewa Post Office, Southern Rhodesia, S. Africa.

1946
Reunion will be held this year.

Dr. J. Rocco Elliott was honored in February by the Laurel, Del., Chamber of Commerce, being named the outstanding citizen of 1955, "as a man who carried the torch of progress in his home town when the outcome was uncertain", referring to the depression years. . . Mr. and Mrs. Ernest Moore (Henrietta Jones) are living in Claymont, Del. They have two sons, Bill, born Aug. '51, and Jeffrey in Dec. of '52. . . Born to Mr. and Mrs. Rosser Farley, Jr. (Janet Lee Reese) a daughter in January. . . Born to Mr. and Mrs. Mitchell Nasser (Mary Jane Stoner) a son, Jeffrey David, last December. . . Mr. and Mrs. Robert N. Evans (Margaret Phillips) are living at 418 Connecticut Ave., Somers Point, N. J.

1947
Mr. and Mrs. Marlow (Mildred Amos) are living in Pittsburgh, Pa., at 372 Dorothy Drive. . . Born to Mr. and Mrs. Sidney Charles Hemming, Jr. (Mary Wright Silvey) a son, Sidney Charles Hemming, III on Feb. 3.

1948
Born to Mr. and Mrs. Russell A. Sellman (Donna Duval, '48) a son, Russell Thomas, last October. . . Mrs. Harvey S. Henning, Jr. (Rebecca Haile) died unexpectedly in December of lobal pneumonia at the U. S. Naval Hospital. . . Settling up after an illness originating in Monterey, Calif. . . Married: Sarah Elizabeth Smith and Claude Spencer Lefter, Jr. in October. . . Married: Phyllis Houck and Glenn D. Smith, Walkersville on Sept. 24. Mr. Smith's brother, Donald, '52, was lost man. . . Born to Mr. and Mrs. Tom Terebinski, a son, Thomas, Jr., on Jan. 5. . . Married: Dolores Jeanne Ewen and Paul A. Rodriguez on Jan. 19, in Reno, Nev. . . Born to Mr. and Mrs. Harry G. Wells (Virginia Dodd) their second son, Thomas Dodd, on July 21; they are living at 2517 Wendover Rd., Baltimore.

1949
Jesse D. Myers, Jr., is in charge of the Branch Laboratory at the Carroll County Medical Center and is a graduate of the Mercy Hospital of Medical Technologists. . . Adam H. Slynofski passed away on May 10 as the result of acute leukemia. . . Engaged: Lois Anna Royer to Donald Ernest Macaw of Norwood, Pa., who is a senior math major at Bucknell. Lois is teaching school at Centerville Elementary School, Pa. . . Lt. and Mrs. Joseph Sherman Garrison III have two sons, J. G. Garrison IV and Geoffrey George; they are living at 1626 Scott Court, Honolulu 18, T. H. . . Married: Gail Skolnick and Stanley Abrams on Feb. 29; they are living at 5600 Woodbine Ave., Apt. 208, Phila. 31. . . Married: Barbara Ann Dodd and Donald Protheroe on Feb. 19; they are living at 155 White St., West Haven, Conn. . . Born to Mr. and Mrs. James V. Cotter (Emma Horn, ex-'51) a daughter, Patricia Ann, on Feb. 21. They also have a son, Mike. "Jim" is a Special Agent with the F. B. I. in Newark. . . Mr. and Mrs. David C. Wood (Annette McManhan) are now living in Glen Ridge and have 2 daughters, Sharon Annette, 4, and Mary Jane born in April '55.

1950
Born to Mr. and Mrs. William Henry, a son, William Don on Feb. 14. . . Born to Mr. and Mrs. Frank J. Smith (Dolly Hyder) twins, Frances Ann and Timothy Sheehan on Feb. 21. Mr. and Mrs. George Winfrey have built a new home in High Point, N. C. George is working in the Western Electric Co. in Greensboro. . . Mr. and Mrs. David C. Herting (Martha Schaeffer) daughter "Cathy" died after a short illness in Feb. . . Born to Mr. and Mrs. Charles S. Spohn (Elizabeth Fowler, '51) a second daughter in November. Charles is studying at Boston U. and has a church also.

1951
Reunion will be held this year.

Married: Elaine Diamond and Byron D. Spooner of Rocky River, Ohio, on Jan. 7. Her husband is a graduate of Western Reserve. . . Engaged: Natalie Ackerman to Kenneth S. Glick, Jr. in Akron, Ohio. . . Born to Mr. and Mrs. Harris W. LeFevre a son, Bruce William in January. . . Born to Mr. and Mrs. Donald L. Frostle a son on December 30. . . "Jim" Culbuck, a manager of the Kelkhafter Container Corp. plant in Tampa, Fla.

Millard Lee Rice

1952

"Jim" Luby is assistant sales manager for Keesby Mattison Asbestos Cement Pipe Factory in Tampa, Fla. . . Mr. and Mrs. Elmer Hohman (Jane Hise, '53) have a son

1953

Millard Lee Rice is Director of the Applied Mathematics and Interior Ballistics Division of the Atlantic Research Corp., Alexandria, Va. . . 1st Lt. Dennis Boye in recent months has been a student in the army pilot training program at Camp Rucker, Ala. . . Mrs. Nancy Hyde Welsh is now living in Bastelestrasse, Ulm, Germany. . . Mary Margaret Rice has moved to Boston, Mass. . . Allan Albert who left WMC before graduating, for the Air Force is now a civilian again living in Tampa, Fla., where he is a salesman for the Industrial Supply Corp. He's married and has two sons. . . Mr. and Mrs. John M. Wolfe (Connie Weisenbach) have a second son, Randy, born last August. . . Mrs. William H. Edwards (Estelle Zies) is teaching 3rd grade in New Haven where her husband is in Yale Seminary. . . Mrs. Dean Miller (Elizabeth Walter) is teaching 8th grade in Glen Burnie. . . Born to Mr. and Mrs. Loring M. Voelker (Sally Fisher) a son, William Lloyd on Sept. 9. They are living in Germantown, Pa. . . Born to Dr. and Mrs. H. Lee Craig, Jr. (Barbara Long) a son on Feb. 25. . . Engaged: Grace Lorraine to Raymond Stevenson; wedding is set for Spring. . . John Edward Becker is living in Silver Spring. . . 1st Lt. Elsie J. Maytrodt, WAC, is at Fort Holabird engaged in a 16-week course in military intelligence work. . . Mrs. Fitzgerald Hiestand, Jr. (Barbara Bankson) has been working with the staff of the University of Virginia Admitting Office. Her husband receives his M.D. degree there in June and has been appointed to the House Staff as Intern on Medicine. . . Arthur F. B. Shanklin (Barbara Davison) has been appointed to the sales staff of Wyeth Laboratories, Philadelphia pharmaceutical concern. "Art" and "Bobbie" are living at 119 Clinton Ave., Hagerstown where Art is with the Wyeth office.

Lt. Elsie Maytrodt

Arthur Shanklin

1954

Harry C. Grander was recently promoted to 1st Lt. in Germany where he is a platoon leader in Company F of the 10th Infantry Division's 86th Regiment; he has been in Europe since May of '55. . . Born to Mr. and Mrs. Edward R. Wagner (Ann Spears) a son on Nov. 11, named Edward R. Wagner III. His father is in the Service. . . Married: Patricia Herman and James A. Douglas, Jr. on March 31. . . Born to Mr. and Mrs. Kirk (Patricia Shaw) a second son, Craig. . . Mr. and Mrs. Warren W. Jones (Adeline Allen) are living at 14611 S. E. 42nd Place, Bellevue, Wash. Adeline is at U. of Wash. College of Education for elementary school training. . . Married: Jane Milby and Charles Wanner. . . Married: Betsy Iyerly and Carville Downes on March 10, in Reisterstown. . . Mr. and Mrs. George Dunn ("Gee Gee" Schoellner) have a daughter, Nan, 2 years old; they are living at 75 Rollinson St., West Orange, N. J. . . Gee Gee's husband is a Physics graduate of Muhlenberg. . . 1st Lt. Alexander Trevelian was recently graduated from The Ordinance School, Aberdeen Proving Ground. . . Married: Shirley Jarvis and Charles E. Butler, in February. . . Joseph V. Ravensin II was promoted to 1st Lt. in February at Fort Knox where he is assigned to Headquarters and Service Co. of the 3rd Armored Division's 13th Infantry Battalion.

Lt. Jos. Ravensin

1955

Engaged: Janet Ethel Boller to A/1c James K. Heins. . . Married: Gloria E. Bunting and Charles W. Blades on December 17 in Frankford, Del. . . Born to Mr. and Mrs. Davidak (Rita Burket) a son, William Michael on July 30. . . Letter from Dick Brenneman on a Fulbright scholarship in Germany reports that in conjunction with his History of Art studies, "It is best to see the art itself—the cathedrals, castles, and modern architecture." Dick writes that he thinks he's becoming an authority on 17th century mounted castles in Westphalia. . . Engaged: Mary Jane Munson to Norman H. Lee of South Weymouth, Mass. She is employed with the Liberty Mutual Insurance Co., Boston. . . Married: Phyllis Hudson and Lt. Jay D. LaMar. . . Engaged: Joanne Seihler, '56 to Richard Durst. . . Engaged: Dolores Alonso to Robert L. Mahoney. . . Frederick P. Haehnel and wife have returned to Japan, Mrs. Haehnel's native land. . . Married: Joan Elizabeth Walter and Barry Winkelman on Dec. 26; "Wink" is in the Army. . . Lt. Carl F. Snyder is en route to Germany as part of Operation Groscope, the army's unit rotation plan. He is a member of the 3rd Division's Advance Party which is replacing the 4th Div. . . Married: Beatrice Louise Ford and Owen August McGlynn on Feb. 26, in Alexandria. . . Russell T. Cook is in the Service at Walter Reed Army Hospital.

2nd Lt. Edward P. Smith was recently graduated from Ranger School in Georgia after completing The Infantry's School's basic officers course at Fort Benning. He is now stationed at Fort Lewis, Wash., and will go to Alaska in the Spring. "Eddie" stopped by on the Hill en route to Washington in March. . . Born to Lt. and Mrs. J. Walter Riegerick (Marilyn Golding) a son, Daniel Phillips, March 14.

Lt. Edward P. Smith

1956

Pfc. Samuel L. Bare, III and wife are in Bamberg, Germany, where "Bo" is stationed with the 62nd MP (Det. A) Highway Patrol. . . Engaged: Eleanor G. Hull to John B. Ness, a senior this year.

1957

Engaged: Betty Ely to A/2c Thomas L. May of Skyeville, who is serving with the Air Force at Mountain Home, Idaho. . . Engaged: Dorothy Jeanne Blair to John H. Kreisher of Westfield, N. J., a graduate of Haverford College, now a graduate chemistry student at the University of Delaware. . . A June wedding is planned for Sandra Earleen Jackson who is engaged to Stanley Reeves Brown of Augusta, Kan. Sandra is a junior at the National College for Christian Workers in Kansas City, Mo. . . Engaged: Karin Schade to Richard L. James, who is a junior at Shippensburg State Teachers College. . . Engaged: Helen Boardman to Robert C. Radcliffe; both are juniors here. . . Engaged: Nancy Jean Corday to Lawrence A. D'Orazio.

1958

Married: Joan E. Stimax and Paul R. S. Leatherwood in Westminster on November 20. . . Engaged: Florence Ann Fay to Douglas Foster Pritchard, a midshipman at the U. S. Naval Academy.

Alumni Issue

Western Maryland College Bulletin
July-August, 1956

1956 Living Endowment Fund Report

941 DONORS

\$14,010.00

Class Of 1901 - Highest Percentage

Class Of 1922 - Highest Total

Class Of 1953 - Highest No. Donors

Class Of 1884 - Oldest Donor

Best Alumni Fund On Record



Alleck A. Resnick, '47, Alumni President

Newly Elected Alumni Officers

Alleck A. Resnick, '47, President
 F. Kale Mathias, '35, Vice-President
 Board of Governors
 Robert E. Bricker, '42
 Jeanne Patterson Ensor, '48
 Visitors To Board Of Trustees
 Charles A. Stewart, '26
 Doris Ritter Ensminger, '49

1956 Fall Sports Schedule

FOOTBALL

September		
22 Dickinson	Home	
29 P. M. C.	Away	
October		
6 Randolph-Macon	Away	
13 Gettysburg	Away	
20 Hampden-Sydney	Home*	
27 Franklin & Marshall	Home	
November		
3 Drexel	Away	
10 Lafayette	Away	
17 Johns Hopkins	Home	
* Homecoming		

SOCCER

October		
6 Mt. St. Mary's	Away	
12 Loyola	Home	
17 Washington College	Home	
20 Delaware	Home (11 a.m.)	
24 F. & M.	Away	
27 Catholic U.	Away	
November		
2 Bucknell	Away	
8 Gettysburg	Home	
13 American U.	Away	
17 Johns Hopkins	Home (11 a.m.)	

Clubs and Club Presidents

Baltimore Chapter

T. Bosley Baugher, '43
 107 Airion Park Ave., Oaklee Village
 Baltimore 27, Maryland.

New York Chapter

G. Thomas Croft, '48
 25 Holiday Drive, West Caldwell, N. J.

Washington County Chapter

Peter George Callas, '49
 38 North Ave., Hagerstown, Md.

Philadelphia Chapter

Jay A. Lockman, '51 (Vice-Pres.)
 1520 Spruce St., Philadelphia 2, Pa.

Washington D. C. Chapter

Ralph D. Smith, '49
 1612 Burriss Road, Rockville, Md.

Carroll County Chapter

Janna L. Randle, '35
 Finksburg, Maryland.

Frederick Chapter

G. Frank Thomas, '08
 71 E. South St., Frederick, Md.

Salisbury Chapter

Minnie Adkins Jones, '16
 Lakeside Drive, Salisbury, Maryland

New England States Chapter

Homer Earll, '50
 62 West St., Lenox, Mass.

HOME COMING OCTOBER 20

Western Maryland College Bulletin

Vol. XXXVII July-August Number 5

Western Maryland College Bulletin, Westminster, Maryland, published monthly during the school year from January to November and July-August, except May, June and September, by the College.

Entered as second class matter, May 19, 1921, at the Postoffice at Westminster, Md., under the act of August 24, 1912. Accepted for mailing at special rate of postage provided for in section 1103, act of October 3, 1917.



Head table, Class Chairmen Dinner L. to R. President Ensor; Dick Groo, Alumni Secretary, Univ. of Del.; George Meyls, '22, Fund Chairman; Mrs. Ensor; Dr. "Bill" Adolph, '41, Alumni President.

1956 LIVING ENDOWMENT FUND REPORT --- 941 GAVE \$14,010.00

More worked, more gave and more was given. These eight words describe concisely the total alumni effort in the Living Endowment Fund drive this year. However, the results of the annual alumni fund were so gratifying that they deserve more notice than one sentence.

On February 16, when Fund Chairman George Meyls, '22, called together representative alumni from many classes for the Class Chairman Dinner at the Stafford in Baltimore, it was evident from the enthusiasm that the program was off to a racing start. Top brass at the dinner are shown above.

Dick Groo, Alumni Secretary at the University of Delaware and Director of the Blue Hens' Alumni Fund keynoted the meeting with a well-chosen topic on the importance of class chairmen to the fund effort.

Chairman Meyls challenged alumni class chairmen to strive for one hundred percent participation among their classmates, and set as the 1956 Fund goal—\$15,000, an

estimated increase of \$4000 over last year's total.

Well, we came close. To date 941 have given \$14,010.00. Deadline for the fund is August 31.

Nearly one third more alumni contributed to this year's fund than last year. This increased interest brought almost one third more contributed. You may remember last year 673 alumni contributed \$10,722.40.

Living Endowment Fund income is used for current operating expenses unless otherwise specified by the donor. The significance of the alumni fund program is a far-reaching one. For instance, the amount alumni contributed this year equals the income which the College would have realized from about \$340,000 in fixed endowment at the present rate of return. This figure represents slightly more than one-fourth the entire endowment fund of the College at the present time. It takes little imagination to recognize the importance of this kind of alumni interest. Not only is this a shot in

the arm to the college's operating budget, but tangible evidence to business and industrial philanthropy that the immediate college family is interested in the progress of its Alma Mater. Alumni giving is the backbone of all other philanthropic giving.

Our increase this year of approximately 33 percent over the total income from Living Endowment last year is above the national alumni fund total increase by about 15 percent. According to figures gathered by the American Alumni Council Alumni Fund Survey the recorded gain this year was 18 percent. 391 universities, colleges and secondary schools in the United States and Canada showed total gifts to alumni funds of \$25,434,357.

Nearly six million living alumni (graduates and non-graduates) are listed by the 391 institutions of which Western Maryland is one. Of these 4,399,079 were actually solicited and 892,914 contributed.

Following our policy of solicitation, 279 other institutions solicited

all alumni for whom they have current addresses. On a national basis, the women's colleges turned in the best performance figures with a percentage of 36.5%; secondary schools were second with 34.3%; men's colleges third with 33.0%; junior colleges fourth with 18.3%; coeducational colleges fifth with 17.1%; state universities sixth with 14.3%; and other tax-supported institutions last with 13.0% contributing. Ours was 16.6%.

Within our own ranks were some rather significant accomplishments percentage-wise also.

The Class of 1884 posted a perfect record — 100% participation. However, since we have only one alumnus listed for this class, it seems hardly fair to overlook the Class of 1901 who for the third year running under the chairmanship of T. K. Harrison showed the highest percentage class participation — 63% second to 1884.

For the second year 1922 with chairman George Meyls heading his own class also, contributed the largest amount from any one

class — \$1155. 53% gave.

The largest single contribution came from the Class of 1902.

Not to be outdone by older classes, 1953 came through with the highest number of individual donors from one class.

Significant also was the tremendous increase some classes showed in number of contributors compared with last year's results. For example, these classes, 1914, 1920, 1926, 1927, 1931, 1936, and 1949 showed 100% increase; 1912, 1916, 1928, 1941, and 1953 showed a 200% increase; 1940, a 300% increase; while 1923 and 1942 can boast a 400% increase in class percentage participation. Other classes also showed increases though not as noticeably as these. No question, the work of class chairmen and their agents added appreciably to these increases.

Before listing class results, we would like to include in this report mention of three other sources of income which are a part of the total financial picture at the College this year. Exclusive of support

from the Church (look for a story in the November Bulletin on this) three main sources can be considered: that directly from industry; that from the Ford Foundation Grant; and that received through the Association of Independent Colleges in Maryland, Inc.

The first payment on the Ford Foundation Grant, \$105,000 was received in July. It has been invested in the regular endowment fund, income from which will be used for faculty salary increases.

Directly from business and industry, \$5,000, came gifts from the Colgate-Palmolive Company, The Esso Education Foundation, Koontz Creamery, and the United States Steel Foundation, Inc.

Thirdly, contributions from Business and Industry solicited by the six member colleges (Mt. St. Mary's College and the College of Notre Dame of Maryland joined this year) of the Association of Independent Colleges of Maryland brought Western Maryland a \$5800 share. Contributors are listed at the conclusion of the class reports.

CONTRIBUTORS TO 1956 FUND

For obvious reasons, where there is only one contributor in a given class, the amount has been deleted. The percentage participation is based on the total number of graduates and non-graduates in the class for whom we have addresses.

1884
Contributors: 100%
Millie Albert Little

1886
Contributors: 17%
B. Alfred Dumm

1887
Contributors: 33%
Carrie L. Mourer

1893
Contributors: 7%
William H. Litsinger

1896—\$49.00
Contributors: 17%
Sarah Myers Bennett
Ida May Dodd
Milton L. Venable

1897
Contributors: 7%
Emma Bowen Kistler

1898—\$49.00
Contributors: 16%
Roby F. Day
Miriam Baynes Matthews

1899
Contributors: 6%
James H. Straughn

1900—\$50.00
Contributors: 11%
David Marine
Evelyn J. Rinker
Etta Gladhill Young

1901—\$352.00
T. K. Harrison, Chairman
Agents: Elwood A. Cobe, Edna Adkins Elderdee, Clayborne Phillips, Minnie Pickett Harrell
Contributors: 63%
Carrie Gladhill Birely
Elwood A. Cobe
Bessie Armacost Cover
Edna Adkins Elderdee
Irene Woodward Fogle
Virginia Weigand Fooks
Minnie Pickett Harrell
Theophilus K. Harrison
William Roswell Jones
Elva Bennett Koller
Nettie Crockett Northam
Clayborne Phillips
Covington May Porter
Reulah Day Shannahan
James E. Shreeve, Jr.
Eulalie Harris Tompkins
Norma Watts Watts

1902
Contributors: 4%
Thomas H. Legg

1903
Contributors: 5%
Florence Speicher Ulrey

1904—\$2.00
Contributors: 16%
Eugenia C. Gelman
S. Hilton Orrick
Bessie Sloan Somerville
Erma B. Stewart
Paul C. Whipp

1905—\$13.00
Contributors: 2%
Melvin R. Harkins
Cornelia Lansdale Hill

1906—\$835.00
C. Alfred Shreeve, Chairman
Agents: George W. Dexter, Margaret Scott Miller, Samuel H. Stevens
Contributors: 29%
Nellie Schaeffer Bare
George B. Bevans
George W. Dexter
R. Holmes Lewis
Margaret Scott Miller
Nellie Nicodemus
C. Alfred Shreeve
Perry B. Slocomb
Samuel H. Stevens
Mary R. Thayer
Roger J. Whiteford
C. Milton Wright

1907—\$205.00
Contributors: 7%
Lewis E. Purdum
E. McClure Rouzer

1908—\$285.00
Contributors: 16%
Fannie B. Merrick
Walter E. Short
G. Frank Thomas
Nina Venables Yeale

1909—\$105.00
Contributors: 17%
Cuthbert W. Bates
Harry C. Byrd
Ober S. Herr
Virgie Williams Jefferson
Ethel A. Parsons
Nona Parks Whiteford

1910—\$129.10

Contributors: 7%
James M. Bennett
Alice Miller Mather
Irene Kimler Miller

1911—\$169.00

Isabel Koop Hendrickson, Chairman
Contributors: 13%
Mercedes Bowman Allen
Ruth Stewart Cecil
Isabel Koop Hendrickson
Oliver P. Simpson
John W. Wright

1912—\$246.00

Mildred J. Haddaway, Chairman
Contributors: 29%
Marianna Albaugh Billingslea
George R. Brown, Jr.
Katherine L. Frizzell
Mildred J. Haddaway
Charles D. Linthicum
Alfred Pfitsch, Jr.
Eva Williams Pfitsch
Grace W. Price
John E. Radford
Minnie M. Ward
Sevra R. Wilmoth

1913—\$15.00

Contributors: 4%
Isaac V. Brumbaugh
William D. Cecil

1914—\$419.00

Ernest F. Dukens, Chairman
Contributors: 31%
Samuel F. M. Adkins
Neva Phares Arnold
Clyde E. Burgee
Jerome R. Cox
Maud Gibbons Danner
Ernest F. Dukens
Meta Eppeler Gilpatrick
Ruth Sidwell Jones
Mabel Durham Kullmar
Helen Brown Mear
Asaiah Shipley Myers
Mildred Warner Pope
Charles W. Wainwright
Lavinia R. Wenger

1915

Contributors: 2%
Margaret Tull Denter

1916—\$215.00

Philip Myers, Chairman
Contributors: 25%
Anonymous
Eloise Dyson Archbold
Clarkson R. Banes
J. Leas Green
Minnie Adkins Jones
Hilda Ross Jones
Guy E. Leister
Philip Myers
Lewys C. Radford
Barbara Willis Voss

Contributors: 1917—\$125.00

John R. Blades
J. Reynold Hodgson
Charles E. Moylan

1918—\$85.00

Contributors: 12%
Dorothy McDaniel Herr
Fred G. Holloway
Joshua W. Miles, Jr.
Paul F. Warner

1919—\$152.00

William V. Albaugh, Chairman
Agents: Esther Bill Jackson, Richard C. Phillips, Myrie C. Reek, Emily Richmond Schwaner
Contributors: 26%
William V. Albaugh
Lafayette Banes
Anna Lewis Defendorf
Josephine Evans Holmes
Esther Bill Jackson
Richard C. Phillips
Samuel B. Schofield
Nellie Adams Sullivan
Emily Richmond Schwaner
John T. Ward

1920—\$669.00

Blanche Taylor Rogers, Chairman
Contributors: 30%
Dorothy Fishel Barnett
Edwina Boteler Bevis
Hubert P. Burdette
Louise Harned Burdette
Hazel E. Owings
Blanche Taylor Rogers
Rachel Price Tamblin
W. Byers Unger
Mayfield Walker
Fannie Schuster Wilson

1921—\$133.00

John M. Clayton, Jr., Chairman
Agents: Pauline Keefe Cromwell, Olive
Ehaga Hess, Mildred Wheeler Moylan
Contributors: 39%
Vivian Englar Barnes
John M. Clayton, Jr.
Wilfred M. Copenhaver
Pauline Keefe Cromwell
Lorraine Hodges Duke
Miriam Bryan Haddaway
O. B. Langrall
Isabel Moore Langrall
William Hanna Littman
Mildred Wheeler Moylan
F. William Paschall
R. Elton Whittington

1922—\$1155.00

George A. Meyer, Jr., Chairman
Contributors: 53%
J. Peyton Adams
Hilda Long Adkins
Joseph W. Aldenderfer
Amy Bennett Black
Pauline Hett Brown
Mildred Taylor Colonna
Ethel Marker Copenhaver
Eleanor Jenkins Dent
May Mason Dixon
Gwendolyn McWilliams Dunn
M. Priscilla Farnous
Margaret Rankin Farrar
Madeleine W. Geiman
Mary O. Green
Edwin R. Helwig
Rita Hoff Hoffman
David Hottenstein
Mary Lankford Keenan
B. Bryan Leitch
Sarah Seney Leitch
D. Carysle Maclean
George A. Meyer, Jr.
Dorothy Ward Myers
Rose Walsh Rease
Helen Koop Rinehart
Elizabeth Carey Shockley
H. Barnette Speir
Myrtle Lankford Todd
Hugh W. Ward
Mabel Ward Williams
Alma Holliday Willis

1923—\$166.00

Caroline Fouts Benson, Chairman
Agents: Harrison M. Baldwin, Martha E. Manahan, Russell W. Sapp, Louise Owens Sapp
Contributors: 26%
Harrison M. Baldwin
Caroline Fouts Benson
William W. Chase
Stockton E. Day
Velma Brooks Delaha
Virginia Eyster Kime
Michael D. Leister
Martha E. Manahan
Charlotte Gough Marbury
E. Mae Rowe
Russell W. Sapp
Louise Owens Sapp
Marguerite Munn Shugart
Naomi Royer Will
F. Anne Wilson

1924—\$192.50

C. Gardiner Warner, Chairman
Agents: Elsie Hoffa Bankert, Lillian Hollins Bender, Ella Linthicum Brownell, Florence Simpson Calhoun, Elva V. Dilman, F. Paul Harris, Margaret Gardner Hearne, Raymond P. Mathews, Clifford H. Richmond, Paul B. Stevens
Contributors: 34%
Elsie Hoffa Bankert

Evelyn Byrd Barrow
Lillian Hollins Bender
Weaver R. Clayton
Clarence L. Dawson
Elva V. Ditman
Dorothy Hoff Griffiss
F. Paul Harris
Margaret Gardner Hearne
Miriam Hull King
Yuri Takemura Muraoka
Clifford H. Richmond
W. Lindsay Sapp
Mary Baker Scarborough
Paul B. Stevens
C. Gardiner Warner

1925—\$215.00

Alva H. Bender, Chairman
Agents: Charles E. Bish, Paul R. Kelbaugh
Contributors: 26%
Lena Martin Ballard
Alva H. Bender
Charles E. Bish
Albert A. Darby
Velva Lewis Grady
Charles T. Holt
Helen Stone Holt
Dorothy McAlpine Jones
Paul R. Kelbaugh
Mary Warfield LeBoutillier
Frances Terrell Long
Emily Alnutt Loos
John D. Makowsky
Gertrude Jones Makowsky
Benjamin W. Price
Thomas D. Shannahan
David H. Taylor

1926—\$472.50

William A. Weech, Chairman
Agents: Elizabeth Deffenbaugh Bare, Albert S. Farver, Dorothy Robinson Greer, Louise Whaley Howard, Katherine Fouts Lawyer, W. Ballard Ward, Ezra B. Williams
Contributors: 29%
Llewellyn Ashburn
Serena Dryden Ashburn
Elizabeth Deffenbaugh Bare
Dorothy E. Beachley
Virginia Wheeler Blakesley
Margaret A. Bowers
Miriam Dryden Carpenter
Chapin W. Day
Mary Turner Furth
W. Preston Grace, Jr.
Rose Conway Green
Dorothy Robinson Greer
Llewellyn Otto Hanna
Louise Whaley Howard
Irma G. Lawyer
Katherine Fouts Lawyer
Elizabeth R. Leister
Walter M. Michael
Louise Fouts Monroe
Ruth Jones Shipley
Charles A. Stewart
Charles E. Subock, Jr.
Caroline Wants Taylor
W. Ballard Ward
William A. Weech
Ezra B. Williams
John D. Williams
Ruth Lenderking Wormelle
Etta Benson Yingling

1927—\$132.50

Gladya Benn Weech, Chairman
Agents: Bernard Barnes, Bessie Grace, Virginia Johns, W. Armen Roberts, Emily Rothel, George Sullivan, John Wooden
Contributors: 12%
Bertha Waddell Beall
Miriam Royer Brickett
Marion H. Ferguson
Bessie Hayman Grace
Louise Hughlett Johnson
Virginia Wilson Shockley
Walter R. Smith
George M. Sullivan
Gladya Benn Weech
Lewis K. Woodward, Jr.

1928—\$137.50

Eugene C. Woodward, Chairman
Agents: Alvin Albright, Ruth Braun, Paul Lamberson, Margaret Ramsberg
Contributors: 14%
Samuel H. Bryant

J. Paul Lamberton
Margaret Mills Lamberton
Eva K. Leque
John A. Mead
Donald T. Phillips
Thomas W. Reed
Virginia Shockley Ruth
W. Owings Stone
Rosella F. Todd
Mabel Barnes Wilkinson
Eugene C. Woodward

1929—\$275.25

Howard E. Kountz, Jr., Chairman
Contributors: 14%
Altie I. Brady
Arthur G. Broll
James R. Day
Gladys Miles Duer
Evelyn Seagrafos Ensor
Ethel K. Ensor
Charles R. Fouts, Jr.
Lillian Maddox Galbreath
Dorothy R. Johnson
Howard E. Kountz, Jr.
Arthur C. Long
Joseph L. Mathias, Jr.
Virginia Holland Nicoll
Madeline Pettit
Elizabeth Wright Shank
Floyd W. Shockley
Catherine Stoner

1930—\$229.57

Thomas D. Braun, Chairman
Agents: Wilmer and Alice Bell, Peter Gonsak, Gladys Joyce, Virginia Meador, Watson and Amanda Phillips, Frances Roberts, James Stock, Raymond Spencer, Julia Woodward
Contributors: 16%
Wilmer V. Bell
Alice Huston Bell
Lucille Frosky Disharoon
George R. Hitchcock
Gladys Richards Joyce
Margaret Leonard Leach
Evelyn J. Mather
Robert L. McCauley
Selena Pickens McMahon
Alexander M. Olcott
Branche H. Phillips, Jr.
Watson D. Phillips
Amanda Bell Phillips
Dennis G. Raynor
Raymond R. Spencer
James A. Stach
Gordon J. Weisbeck
Charles W. Willis
Julia Williams Woodward

1931—\$842.69

James R. Mann, Chairman
Agents: Eleanor Babyion, Ruth Rinehart
Contributors: 23%
Eleanor C. Babyion
Paul L. Bates
J. Wesley Day
George L. Ekatis
Harvey B. Flater
Hannah R. Hecht
Margaret E. Hamilton
R. Christine Hogan
Harry L. Lawrence
Vivian Riegler Long
Evelyn Collision Mackenzie
James R. Mann
Catherine Hobby Neale
H. Mark Reed
Walter M. Reichenbecker
William C. Rein
Isabel Douglas Rein
Ruth Koop Rinehart
Mildred Rann Sturm
Anna Gallion Wilson

1932—\$170.60

Elmor H. Ebaugh, Chairman
Agents: Mary Orr Manspeaker, Katherine Baumgardner, Doris Crumpecker
Contributors: 13%
Howard M. Amoss
George H. Caple
Altha R. Crowther
Doris Legg Crumpecker
J. Harrison Dixon
Elmor H. Ebaugh
Mary McComas Long
Mary Orr Hering Manspeaker
A. Louise Schaeffer
Joseph T. Snyder

M. Virginia Stoner
Evelyn Kauffman Wall
Melva Martin Willis
Contributors: 1933—\$293.60

Contributors: 13%
Ellen Tyler Elliott
Henrietta Little Fouts
John E. George
Elmer N. Hassell
Susanna Cockey Kiefer
Jane K. Kriner
Margaret Erb Mann
Julian T. Murchison
Serena A. Robinson
Dorothy Smith Sappington
Mary S. Stover
David Trundle

1934—\$242.60

Richard W. Kiefer, Chairman
Agents: Mildred Connelly, Lillian Dexter, Ruth Elderdice, Catherine Hack, Roedel Jaeger, Cordelia Kenuai, Elmer Mahoney, Laurlene Pratt, Eleanor Rader
Contributors: 23%
Mildred German Buckohr
Lillian E. Boughner
Emma B. Burtner
C. Leuse Bussard
Mildred Burkins
Aurice D. Fleming
Anna Wigley Hanna
J. Roedel Jaeger
Cordelia Pullen Kendall
William P. Kesmold
Richard W. Kiefer
Elmer J. Mahoney
Elizabeth Humphreys Mahoney
Frederick C. Malkus, Jr.
Mary E. Mather
J. Richard Myers
Dorothy Hull Norris
L. Milton Outten
Victor S. Palmer
Eleanor Kimmey Rader
Howard K. Rathbun
Philip S. Royer
Arleen Guyton Runkles
A. May Russell
J. Randolph Shilling
Roland E. Sliker
Mary Parks Sprague

1935—\$152.60

F. Kale Mathias, Chairman
Agents: Mary Bryson, James Lantz, Evelyn Maas, Janna Randle, Mary Shilling, Dorothy Stegman, Dorothy Tevis, Atlee Wampler, Dennis Yingling
Contributors: 14%
Walter S. Albright, Jr.
John R. Blissman
Mary Brown Bryson
Howard W. Cantwell, Jr.
Evelyn Leigh Churn
Mora Crossman
Webster L. Lucas
F. Kale Mathias
Daniel K. Moore
Harry T. Murphy
John Z. Olsh
Janna L. Randle
Mary Wooden Shilling
Dorothy Barnes Stegman
Mansell R. Stevens
Walter H. Stone
Dorothy A. Thomson
Donald H. Tschudy
Preston G. Wyand
Frances Glynn Wyand

1936—\$361.60

John W. Manspeaker, Chairman
Agents: John Elseroad, Henry Himler, Helen Hoffman, Muriel Kabie, Royer Shipley, Kathryn Sieverts, Vernon Simpson, F. W. B. Thomas
Contributors: 29%
Martha Miller Aiken
Anna M. Baker
Edward L. Beauchamp
Martha W. Berthoff
Harold H. Biehl
William W. Bratton
Louise Birely Broadwater
Josephine Dawson Clark
Joshua H. Cockey
Sarah Burtner Conner
Samuel E. Corbin, Sr.
John K. Elseroad

Ruth A. Falkenstein
Elizabeth P. Hagen
Helen Stump Hoffman
Muriel Waits Kabie
Helen Jacobson Kamens
Anne C. Kean
Katherine Young Mackley
John W. Manspeaker
Charles P. Murray
Henrietta Twigg Murray
Cora Virginia Perry
Virginia Roberts Peters
Margaret Lansdale Puc
Charles E. Read
Marguerite Ringler Richards
Margaret W. V. Schab
Byron A. Schneider
Ethel Gorsuch Schneider
Kathryn Wentz Sieverts
Marvel Jackson Simpson
Vernon R. Simpson
F. W. B. Thomas
Elinor Tollenger Wilke

1937—\$87.00

Contributors: 5%
Robert A. Keifer
Robert P. McKenzie
Rebecca Groves Smith
Katherine Smith Wingate
Paul F. Wooden

1938—\$133.50

Charlotte Coppage Young, Chairman
Contributors: 11%
Janet MacVean Baker
Donald B. Bond
Elizabeth Erb Buddell
Allie Moxley Buxton
Charlotte Cook
Charles R. Ehrhardt
John R. Elliott
Leonard C. Graham
Alice Schneider Larson
Charles E. Millard
Henry B. Reckord
Wesley J. Simmons
Helen Leatherwood Simpson
E. Pershing Volkart
Mildred A. Wheatley
Charlotte Coppage Young

1939—\$191.00

Elizabeth Crisp Rechner, Chairman
Agents: Virginia Karow Fowble, Louise Jameson Higby, Jeanne Lange Myers, Catherine Rudolph Reedy, Lu Mar Myers
Contributors: 18%
Rosa Barrow Barkdoll
May Snider Claggett
Virginia Karow Fowble
Dorothy Cobee Harris
Gladys Coppage Henrickson
Helen Frey Hobart
William L. Klare
J. Carl Myers
Jeanne Lang Myers
Steven J. Radatovich
Elizabeth Crisp Rechner
Catherine Rudolph Reedy
Lois H. Rowland
Aaron Schaeffer
LuMar Myers Slouch
Rebecca Keith Smith
Beulah King South
James E. Stoner, Jr.
Roland L. Stoner
Olive Myers Stoffer
Norma Keyser Strobel
Lawrence E. Strow
Carolyn Timmons Suit
Mary Reese Vause
Georgia O. Wolford

1940—\$181.00

Pauline Nitzel Carman, Chairman
Agents: Virginia Elliott, Homer and Laura Elseroad, Grace Rand, Henry and Catherine Reckord, Raymond Roderick, Dorothy Tyler
Contributors: 16%
L. Scott Brooks
Pauline Nitzel Carman
Catherine Barker Church
Marianne Long Durst
Homer O. Elseroad
Laura Breeden Elseroad
Jean Cox Flagg
Mable A. Fowler

Samuel C. Galbreath
C. Gordon Gilbert
Winifred Coberly Good
L. Carleton Good
Webster R. Hood
Doris Mathias Hood
Arthur B. Hoot
Katherine M. Klier
Leonard M. Linton
Ruthetta Lippy
Jack W. Lyttin
Frank W. Mather, Jr.
Edward S. McLaughlin, Jr.
Grace Gliner McLaughlin
Catherine Joseph Beckord
Eleanor Wheeler Stalcup
Margaret Quarles Strow
William G. Tyler, Jr.

1941—\$225.00

William H. Adolph, Chairman
Contributors: 27%
William H. Adolph
William M. Banks
Ethel Richard Barnes
Pearl B. Bobbitt
Theodore R. Bowen
Mary Louise Asbury Briscoe
Eleanor R. Brown
William D. Burgess III
Ellen Giles Carey
Mary Wright Carr
Catherine Couell Cherry
Elsa Gross Cochran
Frances Royer Copeland
Elizabeth Rankin Corbin
Charles M. Earl, Jr.
Stewart B. Eckers
Robert D. Faw
Arnold N. Fleagle
Francis L. Grumbine
Hazel Beard Guyer
Erna L. Ineyer
John B. Jones
John E. Lambert
Doris Benson Lankford
Nellie Ineyer Lytton
Isabelle Zimmerman Martin
Mack B. McPike
Mildred Melvin Mulvey
Thelma Bowen Offutt
Mildred Gehhardt Rannin
Jane Cowperthwait Read
Edwin G. Reter
Ruth Beard Reter
William C. Robinson
John W. Ryan, Jr.
Ednor Culligan Skelton
Russell P. Smith, Jr.
Clyde A. Thomas
Jeannette Wigley Thomas
Edgar L. Venzke
Virginia Brinsfield Zequeira

1942—\$145.00

Margaret Reynolds Adolph, Chairman
Agents: Robert Bricker, Lucie Leigh Hall,
Caroline Mather
Contributors: 20%
Margaret Reynolds Adolph
Virginia Sweeney Ballard
F. Eugene Belt
Mabelyn W. Bertholf
Robert E. Bricker
Lawrence L. Brown
Elizabeth Schaeffer Cissel
Jenus Yentsch Ellensburg
Margaret Fleagle Frisell
Lucie Leigh Barnes Hall
Jane T. Harrison
Mary V. Hoffmaster
Father Roop Hough
A. Virginia Jockel
Lee M. Kindley
Elizabeth Magrin Landy
George H. Marshall Jr.
Caroline Rudisill Mather
Lauretta G. McCusker
Henry K. Miller
Eloise Wright Morison
Paul R. Myers
Mabel Greenwood Myers
Ruth Dickinson Phillips
Elizabeth Cornany Pickens
Jane Mellor Richl
Jane Fraley Robinson
Ruth Kahring Russell
Robert E. Shockley
James M. Townsend
Patricia White Wroten

1943—\$140.50

C. Frasier Scott, Chairman
Agents: Robert Beglin, Joshua Ensor,
Mary Hall, Doris Linton
Contributors: 17%
D. Robert Beglin
Ruth Whitmore Coltenberg
Janith Horsey Collin
Alice Rohrer Downey
William J. Dumler
Joseph A. Elliott
Joshua D. Ensor
Mary Frances Hawkins Galbreath
Elizabeth Ebaugh Gurney
Doris Jones Kinder
Yvonne Earl Link
Doris Lane Linton
Lee D. Lodge
Pearl Bodmer Lodge
Mary Walker Metzger
Robert J. Moore
Frances Ogden Moore
Clarence E. McWilliams
Muriel Harding Nicolson
John A. Rawlins
Earl P. Schubert
C. Frasier Scott
Virginia Elzey Shockley
Eleanor Henly Taylor
Margaret Moss Yenske
George M. Wehler
John F. Yost

1944—\$95.50

E. Josephine Branford, Chairman
Contributors: 9%
Betty Cowperthwait Adams
E. Josephine Branford
Mary Louise Shuckhart Bricker
Andrew Chi
Olive A. Cook
Margaret L. Daughton
Joseph P. Geary
Anne Covington Kidd
John Eckhardt McWilliams
Margaret Anne Moore Miller
Lucille Giesel Norman
Grace Dryden Venable

1945—\$51.50

Contributors: 7%
Anne Nichols Arnold
Earl W. Morey
Madeline E. Myers
Ellen Honneman McPike
Lucine Hansman Pfefferkorn
Jean Andrews Richards
William E. Smith
Anne Winters Tait
Mary Ober Todd

1946—\$166.00

Mindell Seltzer Guber, Chairman
Agents: Doris Boone, Theo Cullison, Claire
Garrett, Erma Gebb, Catherine Kiddoo, Claire
Mansberger, Jean Williams, Frances
Zapp
Contributors: 12%
Eleanor E. Baker
Edna Haller Beglin
Dorothy A. Bolles
Doris Kemp Boone
Mary Gene Torsch Feicht
Audrey Donaldson Geary
Erna Young Gebb
Mindelle Seltzer Guber
Allen L. Goldman
Jane Dudders Gorsuch
Catherine Schumann Kiddoo
Patricia Barrett Klove
Vernelle Porta Long
Jean Anderson Markowitz
Polly Shipley Moore
Barbara Brower Mueller
Lucy Jane Stoner Nasser
Barbara Randall Pease
Winifred Shauck Pool
Wilbur D. Preston
William T. Richardson
Frances Wahmann Zapf

1947—\$161.39

Allice A. Resnick, Chairman
Agents: Emajane Baker, Charles Chlad,
Marion Fox LeRoy Gerding, Frank Jaumot,
Arthur O'Keefe, Shirley Starkey,
Anna Trader, Nelson Wolfshaeimer
Contributors: 14%
Emajane Hahn Baker
Janet E. Breeding

Blaine G. Broadwater
Jean Murray Clarke
Kathleen M. Coffman
Agnes Lindsay Dushoraw
Simon E. Ehrlich
Robert Grumbine
Frank E. Jaumot
Violet Carr King
Helen Frantz Loper
Raymond Mills
Lert Norman
George Norman
Betty Powell Norman
William E. Pennington
Allice A. Resnick
Lee Beglin Scott
Oren H. Scott
Natalie Humphrey Thumel
Janice Divers Twitcheell
Kenneth W. Volk
George W. Wilson
Nelson J. Wolfshaeimer

1948—\$214.50

C. Donald Brohawn, Chairman
Agents: Catherine Bishop, Clarabelle Blaney, Ruth Burgess, Martha Hawkins, Mae Langrall, Sara Silver, Phyllis Smith
Contributors: 14%
Dorothy Scott Atkinson
J. Catherine Bishop
C. Donald Brohawn
Ruth Anderson Burgess
Eleanor P. Collins
G. Thomas Croft
Geraldine Frizzell Croft
W. Edward Cushen
Helen Lingenfelter Cushen
Robert Y. Dubel
Fred P. Eckhardt
Jeanne Patterson Ensor
Donald Pedder
Janice Ganz Greenwood
Jacqueline Kingley Griffiths
Fern Ray Grumbine
Martha Wittler Hawkins
Janet Brown Hunter
Dorothy Santini Hutton
Elizabeth Arniger Maas
Althea Birkoll Manker
Ruby E. Miller
Betty Little Morey
Anna Hess McLean
Phillip B. Schaeffer
A. Mildred Shipley
Sarah Smith Silver
Phyllis Houck Smith
Mary I. Steele
Madeline Franklin Strader
Virginia Dodd Wells
Nancy Haskins Zabel

1949—\$225.00

E. Della Grauel, Chairman
Agents: Ruby Browning, Bob and Helen Dubel, Jean Heemann, Joan Hildebrandt, Robert Keys, Lenore Look, Gruver Martin, Jean Minnis, Henry Mueller, Cliff and Carol Pedone, Kelly and Eileen Rice, Fletcher and Maradel Ward
Contributors: 13%
Stanley L. Abrams
William T. Barnes
Margaret Buderer Biven
Hugh Burgess
Lionel Burgess, Jr.
William H. Carroll, Jr.
Dextrix J. Clarke
Thomas A. Dalgleish
Audrey L. Dixon
Helen Miles Dubel
Doris Ritter Esminger
James G. Formwalt
Armand J. Gold
Joyce E. Gorsuch
E. Della Grauel
Marian F. Greifenstein
Bror H. Hammargren
Wilton O. Herman
Dalton B. Howard
Allen S. Jacobson
Helen Lindahl Kenzy
James M. Leonard
Leonore Hoffman Lookock
Jean Knox Malach
Shirley Milby Malkmus
Henry J. Muller
Jesse D. Myers, Jr.
Erna Enay Myers
Cliffon J. Pedone

W. Kelly Rice, Jr.
Eileen Weeks Rice
John T. Spicknall, Jr.
Mary Thomas Staszek
Virginia Riker Valentini
Albert F. VanNostrand
Raymond B. Via
G. Fletcher Ward, Jr.
Maradel Clayton Ward
Annette McMahon Wood

1950—\$114.50

Contributors: 5%
Sara Lee Larmore Brohawn
Donald F. Clarke
William B. Dulany
George M. Franks, Jr.
Eather Mullinix Green
Bryan B. Haddaway
I. Vanson Hale III
Martha Schaeffer Herting
Donald L. Lilly
Elinor Price McCrea
Edward S. Nordby
H. Lee Orth
Alvin Paul
David R. Sartorio
Harry A. Travis
Leonard J. Zawacki

Contributors: 1951—\$159.00

Dorothy Arnold Callahan
Gibbert F. Clough
Dorothy Dalgelish Darico
Ann Van Der DeLong
Russell L. Deragon
Jay H. Egely
Stanley J. Fieldman
H. Thompson Lang
Roland V. Layton
Elizabeth Lovelace
C. Elizabeth McCaffrey
Kendrick M. McCall
Richard V. Piel
Dorothy Payant Piel
William D. Scheder
Patricia E. Shear
Elizabeth L. Shivers
William H. Simpson
William H. Smith
Pakpongson Snidvongs
Alice Xenley Snyder
John A. Spencer
Waller B. Wiser
Angela Crothers Zawacki

Contributors: 1952—\$117.50

Audrey Myers Buffington
Elizabeth Simpson Curl
Lucy A. Grace
Carol E. Hackney
Lida Birdsall Hale
Catherine Lay Kohlhoff
Jeanne Dixon Kortveles
Henry E. Landy
Victoria L. Lester
Alma M. Miller
William D. Owings
A. Dorothea Schmidt
Eisle Davis Sartorio
Virginia Hale Spicknall
Margaret L. Stackhouse
James J. Sullivan
Philip E. Uhrig

1953—\$264.00

E. Beth Witzke, Chairman
Agents: Bob and Audrey Langrall, Frances
Leighton, Michael Rentko, John Traband
Janet Wagner, Nancy Wagner

Contributors: 16%

Stuart J. Abrahams
Dorothy Friedrich Alf
Franklin G. Ashburn
Claud W. Ashcraft
Charles A. Bryan
Diane L. Carey
Royal L. Claggett
Joyce A. Clarke
Ashby F. Collins
Lisabeth A. Davis
William J. Dix III
Winifred Spencer Dulany
John Ellen Earl
John H. Edwards
Vernon M. Fox
E. Ann Greer
Clyde E. Grimes

Harlow A. Henderson
Barbara Bankson Hiestand
June Lambert Keck
Robert B. Langrall
Audrey Phillips Langrall
Daniel C. MacLean, Jr.
Ruth Callendar Marmel
Elsie J. Maytrott
Nell Hughes Ogden
Elmer Richards, Jr.
Ruth Lee Roberts
Arthur A. Saltmarsh
Betty Herbert Saltmarsh
Dwight L. Scott
William R. Shoemaker
Anne E. Smutny
Dorothy M. Stackhouse
Janet M. Wagner
Nancy E. Wagner
Hugh W. Ward, Jr.
Carroll G. Warner, Jr.
Karen Nowack Warner
Sarah E. Williams
Barbara A. Wilson
Frances A. Wilson
E. Beth Witzke

Contributors: 1954—\$91.50

Lois A. Cernak
Donald C. Chambers
Shirley A. Cramer
Gordon L. Crooks, Jr.
Patricia Herman Douglas
Dorothy J. Krug
J. Paul Lambertson, Jr.
Debra Meyls Leonard
Elizabeth Muth McCall
Elizabeth M. Norwood
Elizabeth E. Parsons
William H. Pfeiffer, Jr.
Etsu Sano Reid
Barbara J. Summers
Charles H. Wheatley III

1955—\$204.50

Jim and Harriett Whitehurst, Co-Chairmen

Contributors: 13%

Rubin R. Bard
Jean Krata Bateman
Antonia E. Baxter
Betty Bixler
Gloria Bunting Blades
Betty A. Bowser
Carol A. Coleman
Florence A. Collins
Suzanne Dorsey Batista
Mildred H. Eckardt
Wesley Pearson Edwards
Patricia C. Hammersly
James A. Harrison
Shirley Rickards Henderson
Bea John
Robert L. Leather
Thomas Maier
Mary Emma Whitfield Maier
Louis H. Mannar
Bessie B. Myers
Walter M. Preston
Marianne P. Renshaw
Marilyn Goldring Rigerink
Barbara L. Smith
Edward P. Smith
Mary S. Stuart
Henry A. Tait
Alfred H. Wahlers
Yvonne Webb Wahlers
Mary V. Warner
James R. Whitehurst
Harriett Cooley Whitehurst

1956

Jean Sprague Fleming

1957

Edward M. Colliver

1958

James R. Crowley

SPECIAL—\$561.00

Bertha S. Adkins
Anonymous
Dean and Mrs. Wm. David, Jr.
Wilmer A. Dehuff
Henrietta B. DeWitt
Dr. Lowell S. Ennor
W. Lloyd Fisher
Friend
The Horn-Shafer Co.

Rev. and Mrs. R. Reid Isaac
Daniel W. Justice
Howard L. Knight
Gilbert Maleom
The Honorable Theodore R. McKeldin
Robert H. Parker
Phi Alpha Mu Alumnae
Orris G. Robinson
Marguerite Shunk
Norman L. Trott
Rev. and Mrs. Herman Wilson

CONTRIBUTORS TO THE ASSOCIATION OF INDEPENDENT COLLEGES OF MARYLAND, INC.

A. S. Abell Co. Foundation, Inc.
Addressograph-Multigraph Corp.
American Oil Company
Anchor Post Products, Inc.
Arundel Corporation
Austin Packing Company
Banker Watts & Company
Baltimore Contractors
(Victor Frenkel Foundation)
Baltimore Federal Savings &
Loan Association
Bartgis Brothers Company
Barton, Duer, & Kock Paper Co.
Best Foods Incorporated
Beck & Decker Mfg. Company
Borden's Ice Cream
Burt Machine Company
Campbell, Harry T. Sons, Inc.
Carvy Machinery & Supply Co.
Chesapeake & Potomac Telephone
Co. of Baltimore City
Cloverland Farms Dairy
Clow, James H. & Sons
Con Products Refining Company
Container Corporation of America
Davis, F. A. & Sons, Inc.
Dickey, Allan Foundation, Inc.
Elliott Machine Corporation
Fidelity-Baltimore National Bank
& Trust Company
Fidelity & Deposit Company of Md.
First National Bank
Franklin-Balmer Corporation
Frey & Sons, Incorporated
Funkhouser Company, The
General Elevator Co., Inc.
General Foods Fund, Inc.
General Refractories Company
Glassips Incorporated
Gray, Fred B.
Halnes, J. J. & Company
Hecht, Moses S. & Blanche H. Fdn.
Hendler Creamery Company
Hynson, Wescott & Dunning
Inland Steel Foundation, Inc.
Levy, Lester S.
Lyons Conklin & Co., Inc.
Martin, Glenn L. Foundation
Maryland Fiber Corporation
Massachusetts Mutual Life Ins. Co.
McCarty-Hicks Foundation, Inc.
McCormick & Company, Inc.
Meyerhoff, Jack & Sons Fdn. Inc.
Mitchell, Lloyd E. Foundation
Morgan Millwork Company
National Biscuit Company
National Dairy Products Corp.
O'Brien Corporation
Penco Foundation
Peterson, Duane L.
Pittsburgh Plate Glass Co.
Potomac Edison Company
Rouse, James W. Co., Inc.
Schapiro, S. & Sons Fdn.
Shero-Silverdore Hotel
Secony Mobil Company
Southern Galvanizing Company
Stein Brothers & Boyce
Sun Life Ins. Co. of America
Time, Incorporated
Tin & Chemical Corporation
Title Guarantee Company
Union Carbide & Carbon Corp.
United Trust Co. of Maryland
Van Sant Dugdale & Company
Waverly Press
Weiskittel, Harry C. Co., Inc.
Western Maryland Dairy
Young & Selden Company

COMMENCEMENT --- REUNIONS

Statistically the events of the Commencement Alumni Weekend showed that more alumni stayed overnight on The Hill—57 room reservations—than in any previous year. Dinner was served to 388 at the banquet. John Cunningham, '55, represented the oldest class present, Charles Earl, '41, came the farthest—from Guam, the 50 year class had 33 at the banquet including spouses,—presenting a \$595 Living Endowment check to President Ensor. The banquet hall rang with cheers of classes from 1896 to 1951. Cloudy and moisture filled skies did not dampen the spirits of the reunion classes who reminisced over their days on The Hill.

To include samplings on this page of all that took place during these four days would be impossible. We have chosen to present a picture of Dr. D. Wilbur Devilbiss, President of State Teachers College, Salisbury, Md., who returned to his Alma Mater on his 31st anniversary of graduation to deliver the Commencement Address and receive the honorary degree of Dr. of Pedagogy; the poetic after-thought of a member of one of the reunion classes; and a letter to President Ensor from a member of the Golden Anniversary Class. In these are wrapped up the essence of Commencement Alumni Weekend—1956.



Dr. D. Wilbur Devilbiss, '25

(In addition to Dr. Devilbiss who received an honorary degree at Commencement, three other alumni did also: to Rev. Charles Raymond Ehrhardt, '28 and Rev. Lewis Frank Ransom '35, the degree of Doctor of Divinity; to Henry Lauran Darner, M.D., '16, the degree of Doctor of Science.)

1916-1956

O lift mine eyes from earth and let me not
Forget the uses of the stars. Nor let
Me be the judge of others. Let me forget
The clamor of the world and gains hard-got.
Some friends to love me now may Fate allot
To wind me deeply in th' encircling net
Oh happy memories; so large the debt
Of forty years now rounding out the plot.

Infirmity and age will overtake
Us all in time, and so we may not see
The castle of our dreams, but we can make
This day's affair our College Apogee.
Life's evening finds us gray, but gallant still
And peace convenes with us on College Hill.
Philip Myers '16

233 Frankford Hall
McLean Gardens, N.W.
Washington 16, D. C.
June 20, 1956

My dear Dr. Ensor,

Under ordinary circumstances a delayed note of appreciation would be inexcusable, but I plead for tolerance because our recent Class Reunion was such an idyll, that I have wanted to write a vignette for the Alumni publication.

Meanwhile delayed inspiration having become oppressive, it is with gratitude that I now thank you for the charming and heart-warming time we enjoyed as house and banquet guests of the College.

As you know, sixteen of the Class of 1906, most of them accompanied by fine consorts who coalesced perfectly with the class-members, attended our reunion. Seven of us were happily domiciled in our beloved "Billy Mac's" former house. All the niceties of our hospitable welcome,—a warm house, attractive bedrooms with very comfortable beds, towels laid out and an artistic flower arrangement that greeted us as we entered,—made us feel that our host would appear momentarily.

Our reception as Honor Class at the sparkling banquet—free of smoking and cocktails—completed our enchantment. It was good to belong to the lovely world we were in that night!

Breakfast next morning was a merry one, soon followed by a poignant, memory-laden Baccalaureate.

In these days of tension and unrest so often marked by violence, it is good to know that there are still spots unspoiled by decadence.

The serious eyes of the entire graduating class were fixed on you as your sermon, simple and masterly, set before them the choice of their life-goal. Today, as half-a-century ago, Western Maryland is still establishing worthy ideals.

The absence of many classmates and teachers, all remembered as clearly as though our parting were yesterday; the leave-taking of College and each other; these were the shadows that threw into high relief the otherwise happy anniversary of our graduation of fifty years ago.

Today, I regret that in the past, I neglected to maintain closer class contacts. Recent events reveal that College knits an indestructible kinship with one's associates there.

Again, thank you for your understanding heart, and may the years bring you and the College through you ever and ever closer to your high goal.

Sincerely yours,

Margaret Scott Miller

1906

Personals from Alumni

1894

Mrs. Harry L. Ward (Aladelva Jones) of Coral Gables was made an honorary member of the D.A.H. there in January. She is the aunt of Rev. John Bayley Jones, 41, pastor of Calvary Methodist Church, Washington, D. C.

1899

Caleb W. O'Connor, author of "Dear Western Maryland" and many other college marching songs, died in Washington on April 3. Funeral services were held in Baker Chapel. In keeping with Mr. O'Connor's wishes, his ashes have been scattered over the college campus.

1904

Dr. Paul C. Whipp, surviving member of the firm of Campbell and Whipp, announced the closing of his office and his retirement from the active practice of law recently.

1909

Dr. Albert Buckner Coe, immediate past moderator of the Congregational Christian Churches, addressed the conference of those churches in Omaha, Neb., in June.

1911

Miss Marguerite L. Stem, supervisor of special education for the Baltimore Public Schools, died March 29, at the age of 63 after a long illness. . . Mrs. Roy Meyer (Anna Crumrine) died in Florida on July 11, the result of injuries received in an auto accident.

1912

Mrs. Harry W. Turner (Edna Tull) died in Baltimore June 12 after a long illness.

1916

Mr. and Mrs. George F. Kindley returned to the States in June following a month and a half in Europe. George arranged to return the day of his class reunion.

1930



Wilmer V. Bell

Wilmer V. Bell (Alice Huston) was appointed Dean of Baltimore Junior College in May succeeding the late Dr. Chester H. Katenkamp. The junior college he now heads is located in the same building with one of Baltimore's largest high schools, City College and with an expanding enrollment, Dean Bell anticipates not a few problems. By 1957 he asserts B.J.C. will enroll 1000 students. . . Wilmer joined the college staff after returning from World War II duty, during which he served as a regimental commander with the invasion forces in Germany. Following his graduation here, he took additional studies in education and sociology at Johns Hopkins University and taught at City College from 1932 until entering the Army. In 1951 while on the staff of B.J.C., he was recalled for Army duty in Korea where he was assistant chief of staff for logistics with the 1st Corps there, holding a colonel's rank. The Bell's daughter, Barbara will be carrying on the tradition of mother and father this year—she is enrolled as a freshman. . . Chaplain John H. Bell died last September. . . Capt. Samuel J. Cooper ended his maritime career at sea on Feb. 1, when he passed away on board his ship en route from Houston, Tex. to Jacksonville, Fla. He had received his Master's license in 1945.

1931

Wesley Day and wife are in Palembang, South Sumatra, Indonesia where "Wes" is principal of the Methodist English School, and pastor of the English Protestant Church. He is

also superintendent of the South Sumatra District. The Days have sent us a student, So Hock Soei, who will be entering college in September of '57.

1932



C. Walton Kooek

C. Walton Kooek recently became head of the Personnel Division at IBM's new Rochester, Minn., plant. He joined the organization in 1949 where he was in the General and Vocational Section of the Department of Education, a year later becoming Coordinator of Management Development. For the past year, he served as Assistant to the Personnel Division Manager in Rochester. Following graduation from Western Maryland, Mr. Kooek took an M.S. degree in Education at Cornell University and did graduate work at Johns Hopkins University. He is a member of the American Society of Training Directors and Phi Delta Kappa, honorary educational fraternity.

1933

Mrs. Joseph McGrath (Helen Hambach) was selected "Mrs. Prairie Village" for 1956 by Arlene Francis, NBC Television star, in the second annual contest sponsored by the Merchants Association in this Kansas town. She was selected for her outstanding contributions to the community. The McGrath's have two sons, Pat, 11 and Joe Jr., 14. . . Mr. and Mrs. C. H. Linzey (Dorothy Billingslea) accompanied their son Donald, 16, to the National Science Fair in Oklahoma City. He had won top honors and the trip in a local science fair in Baltimore. The Linzey's have a daughter, June, 6.

1934

Lora Milton Outten received his Ph. D. in Embryology from Cornell University this year.

1935

Lt. Col. and Mrs. Preston Wyand (Frances Glynn) and their six children are living in New Rochelle; Col. Wyand is Deputy Commandant of the Army Information School at Fort Slocum. . . Preston L. Grimm is an administrative assistant to the Superintendent of Baltimore County Schools.

1936

S. Edward Corbin (Elizabeth Rankin, '41), is now Regional Aviation Educationalist for the Civil Air Patrol of the USAF in which he acts as educational advisor, director and consultant.

Anne C. Kean, a member of the faculty of the College of Notre Dame of Maryland for the past 28 years, received an honorary degree of Doctor of Laws from that institution in June. She is in charge of the physical education program which is considered one of the finest among women's colleges in the U. S. . . John W. Manspecker Mary Orr Hering, '32) has accepted a teaching assignment at Franklin H. S. in Reisterstown; Mary Orr is teaching Home Ec. at Westminster High.

1937

Lt. Col. and Mrs. Frank L. Brown and family Sharon Lee, Deen Lynn and Frank L. 3rd, are living in the Philippines where Frank is stationed with the Headquarters Squadron of the 6200th Air Base Wing. . . Elizabeth S. Harrison, daughter of Col. T. K. Harrison, '01, has been promoted to Lt. Commander in the WAVES.

1938

Rev. Kenneth M. Plummer is now Professor of Religion and Director of Religious Activities at Cornell College Mt. Vernon, Iowa. He is a candidate for the Ph.D. degree at Chicago.

1939

Mrs. William D. Mohler (Ailene Williams) received her M. Ed. degree from the U. of Maryland in June.

1940

Born to Mr. and Mrs. Paul Starr (Jane Gilchrist) their fourth son, in January. . . . Katherine Klier, Chairman of the English department at Towson H.S., was elected President of the Baltimore County Teachers Association in March.

1941

Kenneth G. Bills is supervisor of athletics and head football coach at Danville, Pa., H.S., where his teams have won 23 of the last 25 games and three conference titles out of the past four seasons. . . . Tane Takahashi was one of nine representatives of Far Eastern countries to spend three months in the U.S. taking a seminar on the Christian College and studying American libraries. Tane is librarian at International Christian College in Tokyo. . . . Rev. and Mrs. Edwin G. Reter (Ruth Board) sailed July 22 from Montreal to the Scandinavian countries, where in Denmark they will be visiting in homes of exchange students coming to the U.S. Before returning to New York, they plan to visit France with seven days in Paris. "Ed" is pastor of Glendon Methodist Church. Ruth is teaching art in Westminster High School.

1942

Andrew M. Bohle passed the Maryland Bar examinations in May.

1943

Born to Mr. and Mrs. Francis "Bud" Blair their first son, Kevin, in Philadelphia. Bud is manager of the Liberty Mutual Life Ins. Co. there. . . . Joseph Whiteford, son of Mr. and Mrs. Roger J. Whiteford, '06, is the newly elected President of Aeolian-Skinner Organ Co. of Boston, the firm he has been with for seven years.

1944

Mr. and Mrs. Irving Russell and their four children dropped in the Alumni Office in July. He is Coordinator of Education for the Glenn L. Martin Company. With him was Mr. and Mrs. E. E. Lamadrid, '46, with their two children. He is teaching in the Albuquerque Public School system. . . . Mrs. Arthur G. Turner (Katherine Clemson) was elected state president of the Maryland chapter of the Children of the American Revolution recently. . . . Born to Dr. and Mrs. Paul Mannino (Phyllis Hess) their seventh child, and fifth son, Donald Edward, on January 26. Paul is practicing obstetrics and gynecology in San Diego. . . . Dr. Viron LeRoy Diefenbach was recently assigned as the Assistant Recruitment Officer, Division of Personnel, Office of Surgeon General of the Public Health Service, Washington.

1945

Born to Mr. and Mrs. Rowland P. McKinley, Jr., (Alice Kuhn) a daughter, Alice Brent Bowle on March 18. . . . Born to Mr. and Mrs. Milan Walker (Ann Elizabeth Lasaux) a son, Milan Mark on March 29; they also have a daughter, Elizabeth Ann, 2. . . . Born to Rev. and Mrs. Earl Morey, Jr., (Betty Little, '48), a son, Jeffrey Scott on March 31; they have two daughters, Deborah 6 and Melanie, 3. Earl has been senior minister at the First United Presbyterian Church of Pittsburgh since July of '52. Address them 2515 Creechedge Drive, Pgh. 35, Pa.

1947

Mr. and Mrs. Arthur O'Keefe (Deborah Bowers, '43), have two sons, Timothy, 4 and Arthur 3d, 3. They live at 2816 Oak Ave., Baltimore. . . . Born to Mr. and Mrs. Fred G. Holloway, Jr., a daughter Christine Dorothy on May 23; another daughter is Debra Jeanne, age 5.

1948

Married: Betty J. Keckler and Louis Nacas, Jr., on June 7 of last year. They are living at Blue Ridge Summit, Pa. . . . Rev. William G. Cook (Mary E. Sands, ex-'49) received his Master of Sacred Theology degree at Westminster Seminary in May.

1949

Born to Mr. and Mrs. Ober Herr, Jr., a son Stephen Kendig on March 10. . . . Born to Mr. and Mrs. Hugh Rogers (Doris Royer), a son, Reid Edwin on April 10. . . . L. Edward Elliott has been named head basketball and baseball coach at the University of Baltimore to come to this post from Kenwood H.S. where he has taught and coached for the past seven years. . . . Born to Mr. and Mrs. Richard Staszewski (Mary Anne Thomas) a son, Richard Christopher on Jan. 23 in New Haven. . . . Married: Lois Ann Royer and Donald E. Macaw

on June 16 in Westminster. Lois's husband, a graduate of Bucknell, is employed by Bell Aircraft as an aerodynamicist. . . . Lt. and Mrs. Paul D. Hines (Emily Coale) have a son Donald Richard born in Germany two years ago and a daughter, Joanne Coale, born March 28 at Ft. Riley. . . . S. George Walters, assistant professor of Economics at Lehigh, was granted a Ford Fellowship to study business administration at Harvard. . . . Mary Ann Hollander Wilson is in Panama where her husband is with the Embassy; address them Box 2016, Balboa, Canal Zone.

1950

Born to Mr. and Mrs. Ronald Elwell (Mary Ellen Smith) a daughter Laura Ann on April 14. . . . Married: Betty Joyce Saylor and Robert Warren Gillebrew on July 9. . . . Born to Mr. and Mrs. James Foster (Shirley Clark) a daughter Sheryl Lou on March 21. . . . Rev. and Mrs. Edward Wright (Libby Schubert, '52), are living in McLean, Va., where "Ed" is pastor of the Andrew Chapel-Dunn Loring Charge. He was one of eight ministers of the Virginia Conference to attend the Southeastern Jurisdictional Methodist Workshop in Leesburg, Florida, this spring. . . . Eugene J. Frank received his Master of Letters degree from the University of Pittsburgh in June. . . . James W. Eshelman is living in Baltimore where he manages a 5 and 16 cent store, is married and has two children. . . . Born to Mr. and Mrs. Charles Myers (Arlene Schreyer) a daughter Brenda Kay in December. . . . Julian Dyke was elected President of the Baltimore Coaches Association this year. . . . Harry V. Adams received the M.Ed. degree from the University of Maryland in June. . . . Bryan Haddaway took his Bachelor of Law degree this year at Maryland. . . . Ruth Allen finished her Master of Science and Hygiene degree at Johns Hopkins in June.

1951

Born to Mr. and Mrs. Thomas deLong (Ann Van Order) their second daughter, Nancy Jane on Feb. 24. Ann writes that her husband took his doctorate in Forestry at Duke in 1954 and now is working for the Pennsylvania Dept. of Forests and Waters as a Research Forester. Address them at Rt. No. 1, Waynesboro, Pa. . . . Rev. Russell Deragon (Dessie Simpson, '53) is now canon pastor at the Cathedral of St. John, Providence, R.I. They are living at 92 Benefit St. . . . Born to Mr. and Mrs. Sidney Zukav (Josephine Kohner) a daughter, Jean on October 13. They are living at 16907 Eldamere Ave., Cleveland. . . . Dr. Charles Sykes, M.D., finished his internship at N. B. Baptist Hospital this summer and began residency in Internal Medicine in July. The Sykes have a son, Charles Martin. . . . Rev. Harris Tompson Lang, who was married in June to Alice B. G. Lee, is continuing his doctorate at Duke. . . . The first Presbyterian Church, Tonawanda, N. Y. . . . T. Frederick Keefe was married to Mary Carolyn Elliott of Hickory, N.C., last August. Fred will be teaching in Georgia this year while continuing his doctorate at Duke. . . . Mr. and Mrs. Charles Ecker (Margaret Brown) opened a bakery in Westminster. "The Bakery Mart", this spring. . . . Born to Mr. and Mrs. Paul Schatzberg (Tobias Isaac, '52) a son Eric Merle on June 23. Address them at P.O. Box 3611 Arsenal, Ark.

1952

Born to Mr. and Mrs. Albert L. Busta (Nancy Lee Dawson) their second daughter, Karen Elaine on March 16; Kathryn Anne was born in October of '54. . . . Born to Mr. and Mrs. Karl Yount, Jr. (Betty Jones, ex-'54) a son, Mark Edwin on January 7. . . . Rev. Ira Zepp (Mary Dodd, '49) won the Tipton Fellowship at Drew and will study Protestant Theology at Edinburgh this year; Mary and son Alan will travel with him. . . . Born to Mr. and Mrs. E. A. Platfoot (Betty Callender) their second child, Anne Elizabeth on May 8. . . . 1st Lt. Marvin Siegel is stock control officer at Inchon Chemical Depot, Korea. . . . Born to Mr. and Mrs. Martin Tallal their second daughter, Kim Marie in May. . . . Dr. Jules J. Levin graduated from the U. of Maryland College of Dental Surgery in June. . . . Dr. Alice B. G. Lee received his Master of Public Health degree from Johns Hopkins University Medical School in June. . . . Born to Mr. and Mrs. William A. Burkhardt (Kathleen McLaughlin) a daughter, Kerrin Lee on July 18.

1953

Married: Beverly Kikuko Omori and George Michio Narumi on May 6 in Los Angeles. . . . Born to Mr. and Mrs. C. Harper (Ellen Widdoes) a son, Jeffrey Paul in April. . . . Rev. Donald Stanton (Barbara Mae Host, '55) received his Bachelor of Sacred Theology degree from Westminster Seminary this year, magna cum laude; Barbara graduated here summa cum laude, majoring in Home Economics. The Stanton's are living in Woodbridge, Va., where Don has three children. . . . Miss Dean A. Miller (Elizabeth Walter) received her Master of Fine Arts degree in dramatics at Columbia this year. . . . Rev. Henry Ernst (Priscilla Johnson) received his Bachelor of Sacred Theology degree, magna cum laude from Westminster this year. . . . From Drew comes news that Harold

P. Johnson and Carroll G. "Pete" Warner received their Bachelor of Divinity degrees in June. Pete is going into the Chaplaincy.

1954

Mary Ann Kiefer Closson, ex-'54, who transferred to the U. of Md. in '52 and met her husband, Harold O. Closson, writes that they both majored in Music there. They now have a son, Gary born last March and are living at 2103 Lou Ellen Lane in Houston, Tex. To be married: Ann Closson, ex-'54, and Larry Taylor on August 30. Larry is doing graduate work at the Univ. of California. . . Married: Patricia Roberts, ex-'54, and Robert Baird. . . Born to Rev. and Mrs. Clark D. Callender (Lee Gongloff) a daughter, Dara on April 6; Clark got his Bachelor of Divinity degree from Drew this year. . . Born to 1st Lt. and Mrs. Charles S. Taylor (Jean Willis) a daughter, Lorraine Lee on Feb. 25. . . Jane Hutchinson was honored when her aquaint and etching, "Street At Night" was purchased for the permanent collection of the Library of Congress; she has been doing graduate work at Oberlin and has been selected to accompany a group from there on a three month tour of Europe. . . Married: Marilyn Kathleen Diana, ex-'54, and Charles Price Covington on May 30. . . Donald Erb finished his Bachelor of Engineering degree at Johns Hopkins University in June. . . Engaged: Jane Anne Collins to Lt. (jg) George Marshall Hill of West Hartford Conn. . . Married: Shirley Anne Jeffreys and William Robert Strong of Memphis, Tenn. . . Engaged: Betty C. Parsons Pihlen, R.N. of Columbia of Hopetown, Va. . . Engaged: Carol Ruth Brown to Philip Rodney Smith of Silver Spring. . . Married: Margaret Holt and Dr. Frank Mate, Jr., in June. . . Beatrice Shaw Hill was a bridesmaid for "Peg" who is going to be teaching Core at Kenmore, P.S. in N. Y. . . Nina Dawson, R.N., is nursing at Asbury Home in Gaithersburg. . . "Bill" Harvey is teaching at a Methodist Mission School in the Belgian Congo.

1955



Lt. Gus Lamar

Lt. Tom Mabry

Born to Mr. and Mrs. John Dewey (Nancy Pennington, ex-'58) a son on May 28. . . Engaged: Mary Victoria Warner to Lt. Robert A. Swedell. . . Married: Elizabeth S. Shepherd and Thomas Clyde Collinson, Jr., of Annapolis. . . Married: Beatrice Louise Ford and Owen August McGlynn, Jr., on Feb. 28. . . 2nd Lt. Larry S. Crist was one of two U. S. Army officers from the 24th Infantry Division who were on a month's attachment with the 1st Battalion Queen's Own Cameron Highlanders in Korea in an officer exchange program. Larry lived the life of the Highlander officers complete with bagpipes, kilts and afternoon tea. . . 2nd Lt. Lou Fogler (Nancy Ann Baylis, '54) is also a member of the 24th Division in Korea. 2nd Lt. Roy Etzler is a platoon leader in Company C of the 17th Regiment of the 7th Inf. Div., in Korea. . . Lt. Edward P. Smith left Fort Lewis, Washington in July for assignment at Eielson Air Force Base, Alaska: while aboard ship enroute was detailed as police and sanitation officer. . . Married: Shelley Ann Myers and Hans Willen, '56 in June; Hans is working for the Cities Service Oil Co. . . Word from "Mike" and "AP" Wahlers brings news of army induction for Al. . . Married: Sue Dorsey and John Batista, '56, on June 30; on the same date—Doris Tuckwood and Richard Linton, '54, "Dick" is completing doctorate work at the Univ. of Pennsylvania. . . Married: Christine Windish and Robert E. Snyder April 2. They are living at 226 E. Church St., Frederick. . . Married: Doreen McNeil and Jack Snover in Frederick on June 9; on the same date—Virginia Quinn, ex-'57 and Alan Hagenbuch in Lawrenceville, N. J. . . 2nd Lt. James M. Marshall now with the 3rd Armored Division, left recently for Germany with Operation Gyroscope, a part of the Army's rotation plan. "Jim" is with the 29th Armored Inf. Battalion, platoon leader of Company A. . . Married: Kay Puck and Ken Lynch in February. . . Married: Jean Nicodemus and Edward Huss. . . Engaged: Janet Ethel Boller to A/IC James K. Heins. . . Lt. Craig Schmal, in the Medical in Korea, writes that there is quite a WMC contingent assigned to outposts near him. . . Al Bopst, Charlie White, Tom Mabry and Gus Lamar besides the several officers mentioned above.

1956



Lt. Roy Etzler



George A. Gipe

George Albert Gipe has won a Fulbright Scholarship for study in English literature at the University of Glasgow this coming year. . . Gertrude Banker is in the Dietary Dept., at Springfield State Hospital. . . Married: Beverly Ann Reiber, ex-'54, and Fred Thomas Pihlen, Jr., on June 9 in the University of Maryland Chapel; Rev. William E. Smith, '45 officiated. . . Married: Margaret Roberts Ramsburg, '55, and Harris Waxman. . . Engaged: Marilyn Haslip, ex-'59 to Robert Ellsworth Green. . . Married: Marie Upperco and George Leonard Douglas on June 29 in Westminster. . . Married: Barbara Ann Eckhardt, '55 and Daniel Wheeler Moysenian in Baker Chapel in June; Danny won the Alumni-Citizenship Award presented at the Senior Banquet this year. . . Born to Mr. and Mrs. Mac McTeer, '53 (Byrd Schmidt, ex-'46) a daughter, Jeanne Joan in February; they have one other child, Bonnie Lee. . . Married: Shirley Gootee and Donald Reid McWilliams. Shirley will teach 9th grade Core in the Towson H.S. this year. . . Married: Nancy Kemmerer and Jack Turney on August 11; Jack plans to study Law this fall. . . Engaged: Sharon Albaugh to William A. Ward; Sharon plans to teach physical education at Gettysburg H.S. . . Married: Ruth Dickson and Walter Melvin Preston, Jr. Ruth will teach at Dunbarston H.S., Towson. . . Married: Dorothy Wade and Robert H. Truitt, ex-'57, Dottie will teach in Wisconsin County. Others who will become teachers this fall include Fairy Froek, Eleanor Lawson, Priscilla McCoy, Nancy Penneyacker, Janet Reck and Janet Seymour. . . Graduate study will be undertaken by Dick Betters (School of Foreign Service, Georgetown University), Mary Warren (Duke University), Kathleen Holt (Mount Holyoke), Bruce Price and Leslie Werner (Westminster Theological Seminary), Dick Huffines (Boston University), Phyllis Johnson will study medical technology. . . Nancy Ripple has entered the Executive Training Program at Hutter's in Baltimore. . . Charlotte Ridgely is a trainer at Stewart & Co. . . Howard Shores hopes to go in the Navy soon. . . Charles Conover is production supervisor with Du Pont in Wilmington. . . Walt Sanders is a technical assistant in training and methods with the Gas and Electric Co., in Baltimore. . . Brad Jones is a bank employee in New Jersey. . . Howard Hunt has accepted a position with Cities Service. . . Hugh Howell has been a physicist with the Weather Bureau in Hitchcock, Texas this summer. . . Ray Meli is a reporter for the Salisbury Times. . . Lovie Lee Mann (Janet D. Thompson, ex-'57) is an administrative clerk with the National Institutes of Health, Division of Biology Standards in Bethesda.

1957

Engaged: Mary Ellen Placht, ex-'57 to George Walter Brooks 2d. . . Engaged: Shirley Margaret Shugart to Peter Wood Duval, Jr., ex-'57. . . Married: Doris Estelle Barker, ex-'57 and Paul William Galvin, '55.

1957

Married: Joan Evelyn Stimax and Paul R. S. Leatherwood last September.

Alumni Issue

Western Maryland College Bulletin
December, 1956



COVER STORY

The 1956 Homecoming Court was exclusively a Maryland aggregation of beauty and popularity.

On the cover pictured from left to right are Homecoming Queen Marilyn Eccleston, senior from Takoma Park. She is an art major, head of the cheerleaders and a member of Phi Alpha Mu.

Caryl Jeanne Ensor, junior attendant, makes her home in Blanche Ward Hall except for holiday trips across to the home of her parents, President and Mrs. Lowell S. Ensor. She is a biology major, member of the Sigmas and plays flute in the orchestra.

Leanne Manning, sophomore attendant, is a graduate of Montgomery Blair in Silver Spring. She is a sociology major, a member of the Pom Pom Girls and Phi Alpha Mu sorority.

Quincy Polk, senior attendant, transferred to WMC from De Pauw University. She hails from Pocomoke and majors in Public School Music. Quincy is a member of the choir, French Club and Sigmas.

Vicki Piram, freshman attendant, came to Western Maryland from Fort Meade where her father is stationed. She is an industrial Chemistry major, and is interested in intramural sports and dramatics.

Clubs and Club Presidents

Baltimore Chapter

T. Bosley Baugher, '43
107 Airion Park Ave., Oaklee Village
Baltimore 27, Maryland.

New York Chapter

G. Thomas Croft, '48
25 Holiday Drive, West Caldwell, N. J.

Washington County Chapter

Harris Le Few, '51
1325 Glenwood Ave., Hagerstown, Md.

Philadelphia Chapter

Jay A. Lockman, '51 (Vice-Pres.)
1520 Spruce St., Philadelphia 2, Pa.

Washington D. C. Chapter

C. Frasier Scott, '43
4610 Edgefield Rd., Bethesda, Md.

Carroll County Chapter

Donna Sellman, '45
44 Bond St., Westminster, Md.

Frederick Chapter

Roger Willard, '30
144 Kline Ave., Frederick, Md.

Salisbury Chapter

Minnie Adkins Jones, '16
Lakeside Drive, Salisbury, Maryland

New England States Chapter

Homer Earll, '50
62 West St., Lenox, Mass.

Southern California Chapter

Rev. Harvey Buck, '45
P. O. Box 249, Santa Paula, Calif.

President's Column



Alleck A. Resnick

This is a first. I hope that each issue of the Bulletin will include an article from the President of the Alumni Association.

During the five or six months that I have been in office I have had the opportunity to spend an evening with several of the Chapters. The Washington Chapter had a wonderful dinner meeting, thanks to Frazier Scott, George Norman and the wives. Frazier was elected President for the current year. On November 1st, the wife and I along with President and Mrs. Ensor and Phil Uhrig attended a dinner meeting of the Washington County Chapter in Hagerstown. We certainly enjoyed the evening but were somewhat disappointed in the small turn out. I wasn't able to attend the dinner meetings of the New England and Frederick Chapters, but our travelling Secretary, Phil Uhrig, did attend. On November 8, a bridge party was held by the Baltimore Chapter which I attended along with 100 women. All the proceeds of this affair will go toward the Living Endowment Fund.

If the Chapters will let me know of their affairs in advance, I will attempt to publicize the event, as well as attend.

The drive for the Living Endowment Fund will begin in February. If you haven't worked on this annual alumni fund drive before and would like to do so, write me. Last year we raised over \$14,000.00 and we are looking forward to a bigger and better year. Again this year the campaign will be headed by chairman George Meyls.

Alleck A. Resnick

Western Maryland College Bulletin

Vol. XXXVII December Number 6

Western Maryland College Bulletin, Westminster, Maryland, published monthly during the school year from January to November and July-August, except May, June and September, by the College.

Entered as second class matter, May 19, 1921, at the Postoffice at Westminster, Md., under the act of August 24, 1912. Accepted for mailing at special rate of postage provided for in section 1103, act of October 3, 1917.



New England Alumni: L. to R. Seated—Lois Hicks Earll, '51; Mary Jane Munson Lee, '55; Homer Earll, '50; B. Alfred Dumm, '86; Rowland Armacost, '37; Mrs. John Wright; Mrs. Joe Corletto. Standing—William Keefe, '44; Phil Uhrig; Norman Lee; Beverly Warner Hensler, '53; Don Hensler, '55; Mrs. Rowland Armacost; John Wright, '11; Joe Corletto, '50; not shown, Mr. and Mrs. Carlton Mendell, '47 (Jeanne Corkran, '45).

An upsurge of alumni chapter activity was experienced this fall with seven having completed meetings and with others already on the planning board for the coming months.

New England

Last spring alumni in the New England states held their first meeting in Worcester, Mass. Pictured above is the group which attended the second dinner meeting on Oct. 26, at the Manchester Country Club, N. H., where they gathered to honor one of their oldest members, Dr. B. Alfred Dumm of North Weare. At the dinner, Dr. Dumm was presented an Alumni Citation by the College for outstanding contributions in Religion and Philosophy. Plans are now underway for a spring dinner in the Boston area on April 27. Homer Earll, '50 is President; Rowland Armacost, '37, Vice-president and Joe Corletto, '50, Secretary.

Southern California

Completing our chain of chapters from coast to coast, was the organization of the Southern California Chapter. Thirteen area alumni, pictured below, gathered for their first meeting in Los Angeles on Oct. 27.

To Harvey Buck, '45 goes credit for doing the spade work in organizing our youngest chapter.

Another meeting is planned for Jan. 5, at the Nikabob Restaurant in L.A. at 7 p.m.

Metropolitan Washington

Over 80 enthusiastic alumni in the Washington area turned out for a banquet in Arlington on Sept. 28. Most of the responsibility for the success of the dinner went to Frasier Scott, '43 (who was elected President) and George Norman, '47 and their wives.

Frederick County

About 25 alumni from Frederick and Carroll Counties attended a dinner at Trinity Methodist Church, Oct. 16, their first in several years. Roger Willard, '30 was elected President.

ALUMNI CHAPTERS COAST TO COAST

Washington County

Alumni in this area met for dinner in Hagerstown on Nov. 1, at which time Harris LeFev, '52 was elected President.

Metropolitan Baltimore

The annual dance of the College Alumnae Intersorority Council is to be held on Sat., Feb. 16, from 9 to 1 at Edmondson Village Hall. Tickets at the door; tables may be reserved by calling Mrs. Howard J. Hughes at Clifton 4-7377.

Salisbury

Mrs. Annie White Johnson, '94 and two 1956 graduates, representative of a span of 62 years, were among 55 alumni and friends present at the fall meeting of this club on Wed., Oct. 10, in the club basement of Mr. and Mrs. Samuel F. M. Adkins.

Begin to enjoy the activities of your chapters. If you have not already attended, try to do so in the future. Should you live in an area where no chapter exists but where there are sufficient alumni to organize one, write to the Alumni Office for help in starting one. Wherever you are, it's enjoyable when Western Marylanders get together.





THE HOMECOMING '56

It seemed to those who observed the observers that an air of expectancy, greater this year than ever before, dominated the homecoming crowd (shown above) as they waited the arrival of the student parade.

The annual alumni award for the best float went this year to Gamma Beta Chi for the float pictured at the top of the opposite page. Using as their theme of defeating the Hampden-Sydney Tigers, the current craze "Hound Dog", they captured the hearts of the alumni judges and took top honors. Despite the loss of the game, second in two years for homecoming alumni, there was an enthusiastic crowd all the way.

Several innovations were present this year, for one, the new scoreboard on Hoffa Field. First used in the season opener here against Dickinson, it added greatly to the enjoyment of the game. It was the gift of the classes of 1956 and 1957 in conjunction with the College.

Not shown pictorially were the





very elaborate decorations on Hoffa Field inspired by M/Sgt. Archie Algire, '38, a member of the ROTC Staff here. With the help of a crew of freshmen, Archie gave the spectators a real treat. End-zones of the playing field were checker boarded in colors representing the two colleges, while goal posts were wrapped in crepe paper of the same colors. The Terror team burst onto the field through a huge cloth arrangement which carried the slogan—Terrors Tame Tigers—as green and gold smoke pots were set off. Attention was drawn to the event

by the explosions of aerial bombs.

At the alumni reception in McDaniel Lounge, alumni were greeted by representatives of the four sororities under the direction of Dr. Helen G. Howery, Dean of Women. Although sororities held open house in clubrooms, six members from each helped serve in the Lounge.

On the opposite page is a picture of President Ensor crowning the 1956 Homecoming Queen, Miss Marilyn Eccelston. For further information on the All-Maryland Homecoming Court see the Cover Story on page 2.



FALL SPORTS



Dennis Harmon

Dennis Harmon, three sports man, is captain of the soccer team. A graduate of Franklin H.S., Dennie is a resident of Garrison, Md. He was named All-American soccer player in 1954 and stands a good chance of repeating this year. Recently he was selected for first team honors on the 1954 All Mason-Dixon Squad. At center forward this year, Harmon scored 25 of the 38 goals his team totaled, a feat which ranks him with the best in the country. He is a great team player who has a genuine interest in the game and in his teammates. Dennie is an Economics major, Adjutant of the ROTC cadet battalion and a member of the Gamma Beta Chi fraternity.

Of the three teams fielded by Western Maryland this fall, the soccer team compiled the best won-lost record with 7 victories and 2 defeats. Both losses for the Uhrig pitchmen came from Mason-Dixon opponents. Western Maryland's booters, defending Mason-Dixon champions, lost the cup to a strong Catholic University eleven this year on the victor's field 6-3. In the final game played at home, Hopkins won the game 4-3. With this loss went also the chance for a tie with Drexel for the championship of the southern division of the Middle Atlantic League. Despite these losses, the over-all record was good.

Varsity football, coached by Charlie Havens with part-time assistant coaches Vic Makovitch and Joe Renaldi, finished the season with 1 victory as against 8 defeats. Strong competition coupled with injuries in key positions hampered the Terrors all the way after the season's opening win with Dickinson 12-6. The Havens' men operated out of a T-formation this year. Close games were dropped to Randolph-Macon 2-6, Franklin & Marshall 6-12 and Hopkins 0-7.

The Junior Varsity football team, coached by Joe Renaldi, fared a little better with 2 wins and 3 losses for the season.

Team records are not the only important part of the inter-collegiate sports program. Those who play the game and how they play it may rate even higher

in importance in the long run.

With this in mind, we are presenting portraits of the two varsity captains who exemplify the type of athlete Western Maryland produces, win or lose. Both are seniors and both happen to be Marylanders.

Varsity Basketball 1956-57

HOME GAMES

Fri.	Jan. 11	Washington
Sat.	Feb. 9	Johns Hopkins
Tues.	Feb. 12	Susquehanna
Thurs.	Feb. 14	Mt. St. Mary's
Tues.	Feb. 19	Gallaudet
Thurs.	Feb. 21	Catholic U.
Wed.	Feb. 27	Loyola

Game Time: 8:30 p.m.

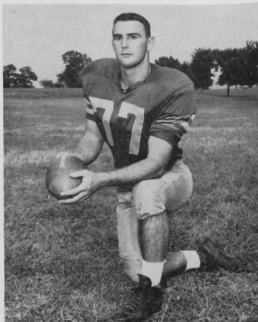
Game Site: Gill Gymnasium

AWAY GAMES

Sat.	Jan. 5	Washington
Wed.	Jan. 9	American U.
Sat.	Jan. 12	Gallaudet
Tues.	Jan. 15	Mt. St. Mary's
Sat.	Jan. 19	Loyola
Sat.	Feb. 23	Johns Hopkins
Sat.	March 2	Randolph-Macon

Coach: Richard Clower

Robert Butler, (below), field captain of the football team, is a graduate of Frederick H.S. and a 190 pound tackle for the Green and Gold. One of those "iron men" who played practically every minute of every game until injured in the final game with Hopkins, Bob was named to the All Eastern College Athletic Conference Football Team for the week of Oct. 27; a first for Western Maryland. A greater honor was the recent announcement that Bob had been selected on the Second Team of the All-American Methodist University and College Eleven picked by Fred Russell, nationally known for his "Pigskin Preview" in the Saturday Evening Post. Bob also holds a letter in Track. Not unlike Harmon, Butler takes responsibility of the playing field as well. This year he was chosen Cadet Commandant of the ROTC Unit. He also is an Economics major and a member of the Delta Pi Alpha fraternity.



Robert Butler

Personals from Alumni

1886
Dr. B. Alfred Dumm of North Ware, N. H., was honored by the New England Alumni Club and the College on Oct. 26, when he was presented an Alumni Citation for outstanding work in the fields of Philosophy and Religion at a dinner in Manchester, N. H.

1892
Mrs. John F. Keller (Ida Haver) formerly of Buckeystown is now living at the Home of the Aged in Frederick.

1893
The Reverend Otto Dennis McKeever died at his home in Beyley, Ohio in October.

1900
John R. E. Turpin, 75, a retired civil engineer, died Oct. 29, in Eastland Memorial Hospital of a heart condition.

1901
Col. Urss M. Diller, USA retired, died Sept. 16, in Braddock Heights.

1902
Edna May Giotfelty wife of Dr. W. B. Giotfelty died Thursday, Sept. 13, in Aspinwall.

1903
Emma Duncan visited the campus on Oct. 11, on an eastern visit from her home in Riverside, Cal.

1904
Baird Devilbiss died on Aug. 28.

1914
Rev. Walter Bunch Surratt, ex-'14, has retired from the ministry and is living in Lexington, N. C.

James E. Haigleigh died May 28 of a coronary heart attack while on a trip near Brattleboro, Vt.

Married: Rose Walsh Reese and Dr. Morrell N. Mastin in Oakland, Md., on July 16. . . Dr. Hugh Ward was awarded the "Physician Of The Year Award" by The Maryland Academy of General Practice in October.

1923
John A. Hafer died in October.

1925
Rev. Hugh C. Burkins (Susie Bell Mathews) died in April.

1930
Wilmer V. Bell (Alice Huston) has been appointed Director of Adult Education in Baltimore.

1932
Married: Dorothy Beall Hook and Dr. Stuart D. P. Sunday on Aug. 1. . . Rev. Wayne Moore is now pastor of Bethel Methodist Church in Los Angeles, is living at 727 W. 80th St.

1933
Harold Kopp (June Cooling) is head football coach at Brigham Young University; June is teaching in the Provo H.S.

1934
Clarence O. Fishpaw has been elected President of the Westminster Chamber of Commerce. . . A. S. Sad-n-v is in his fifth year of coaching at Bethesda Chevy Chase H.S.

1935
Dennis Brown has been promoted to a full professorship at Long Island University. He is chairman of the Speech-Theater Dept., and director of the university's theater. . . Donald F. Keyser (Maudie Willis) died unexpectedly on Sept. 1, the result of an industrial accident. . . Col. Albert N. Ward, Jr., is Chairman of the Regimental Committee of the Infantry School's Tactical Department at Fort Benning.

1937
Elizabeth S. Harrison, daughter of Col. T. K. Harrison, '01, has been promoted to the rank of Lieutenant Commander in the WAVES. . . Lt. Col. Robert K. Myers, Jr. was recently assigned to the Post Signal Office at Fort Monroe, Va.

1938
Mrs. Ruth Starr Maus, died unexpectedly in October, the result of a cerebral hemorrhage after an illness of a few days. Born to Mr. and Mrs. William P. Stonebraker (Doris Smedes) their fifth child, Thomas Branch on May 19.

Col. Harold D. Hansen is a member of the Class of 1956-57 at the Army War College, Carlisle Barracks, Pa. He was one of 200 senior officers of the Armed Forces selected because of his broad experience for the 10 month course at the Army's highest educational institution. Col. Hansen's decorations include the Silver Star with Oak Leaf Cluster, the Bronze Star Medal with Oak Leaf Cluster and the Purple Heart. . . Born to Mr. and Mrs. John E. Cross, Jr. (Mary Clemson) a son Charles Thomas on June 17. . . Mrs. Barbara Fogelsanger Guise was recently elected President of the Association of School Librarians of Maryland.

1941
Mrs. John P. Vergis (Eleanor Prescott) is teaching Home Economics in Tempe, Ariz., where her husband is a member of the Education Staff at Arizona State College at Tempe. . . Born to Rev. and Mrs. C. Albert Guyer (Hazel Beard) a son, Paul Lawrence on Aug. 25. Their other son, Carl is three.

Lt. Col. William C. Robinson (Jane Fraley, '42) is serving as an aide-de-camp to General E. W. Rawlings, Commander of

Air Material Command, Wright-Patterson AFB, Ohio. During World War II, he participated in 13 B-24 missions as a navigator and was awarded the Air Medal and Commendation Ribbon. Last year, Col. Robinson attended the Armed Forces Staff College in Norfolk.



Col. Robinson, '41

1942
Major James M. "Pete" Townsend has returned from duty with the Military Advisory Group, Taif, Saudi Arabia, and is now assigned to duty with G-3, Headquarters, CONRAC, Ft. Monroe, Va. His wife, Gladys and children Stephen and Sandra are residing with him at 346 Apt. c, Gulick Drive, Ft. Monroe.

1943
Earl P. Schubert (Betty Jane Bowman, ex-'46) is now principal of the Parkway Consolidated School District Jr.-Sr. H.S. of St. Louis County, Mo; Betty is teaching fourth grade. . . Francis J. "Bud" Blair is Sales Mgr., of the Liberty Mutual Ins. Co., in Philadelphia. . . Lt. Col. Albert "Bert" Jones has returned from the Air Univ. at Denver and is now at the Pentagon. The Joneses have four children, and live at 6012 Kingsford Rd., Bethesda, Md. . . Jean Bentley Thompson writes that her husband has been transferred to the New York office (Empire State Bldg.) of DuPont and is now in Sales in the Pigments Dept. They are living at 26 Sherman Ave., Closter, N.J.

1944
Born to Rev. and Mrs. William Keffe a daughter, Nancy Jean on Oct. 9, in Manchester, N.H. . . John W. Alexander, Jr., ex-'44 is Economic Advisor to the Council of Manila, P.I. under I.C.A.

1945
Anne Nichols, the former Mrs. Nelson Arnold, is now living at 400 E. 57th St., N.Y. 22.

1946
Julia Finlay, ex-'46, is employed in Europe as a civilian member of the Special Services program for the U.S. Army as a Crafts Director in which she is responsible for supervising 3 craft shops and 4 photo labs in Bavaria. . . Born to Mr. and Mrs. Edward H. Henkler (Jane Kester, ex-'46) a son, Edward Steven on July 16, in Glen Rock, N.J. . . Born to Mr. and Mrs. Walter West (Milly Lloyd) their second child, Marthann on Jan. 8. Wally is manager of the Tampa Philharmonic Orchestra and president of Perma-Stone West Coast Inc., and a member of the famous "Florida Knights" Barbershop Quartet. . . Born to Mr. and Mrs. Charles O. Knight (Jeanne Berryman) a son, Craig Lee on July 28. Jeanne has two other children, Eric David and Christine Ann. The Knight's live at 9 Waugh Ave., Glyndon, Md.

1947
Rev. and Mrs. Herbert Doggett (Joanne Mae Hauver) are living at 9615 New Hampshire Ave., Silver Spring, Md. . . Irving V. Swalwell and family are living at 2426 Titus Ave., Omaha 12, where Irving is still with the Navy as an enlisted Reservist on active duty in the "Training-Administration Program." . . Born to Mr. and Mrs. Fred M. Mowbray (Lillian M. Gillis) a son, Fred Mace, Jr., on May 30. Their daughter, Barbara Ann is four.

1948
Born to Mr. and Mrs. Wason Strader (Madeline Franklin) a daughter, Patricia Lee on March 23; their son Warren was born in June of '54. . . Engaged: Mary Jane Lester to Harry Beall. Harry is now associated with Columbia Artists Management in N.Y. . . Born to Mr. and Mrs. L. Albert Beaver (Betty Jane Stonesifer, ex-'48) a son, Kevin Wayne, Aug. 29.

1949
Mrs. James W. Powell (Shirley Brooks) now living in Raleigh, N.C., where her husband was transferred as manager of the terminal for R.C. Motor Lines, Inc. They have a son, Rob, one year old. Mr. and Mrs. Lloyd Hoover (Charlotte Goodrich) are living at 4504 Tonquill St., Beltsville. . . Born to Dr. and Mrs. George H. Beck, Jr. (Wanda Bradham) a son, George Henry, Jr., Sept. 23. . . Mrs. Donald Dew (Norma E. Wright) received her M.A. degree in English and Education from the State Univ. of Iowa in August. At the same time her husband received his

M.A. in Speech Pathology; they live at 24 N. Van Buren, Iowa City. . . Mr. and Mrs. William R. Gable (Virginia Woot) are living in Glastonbury, Conn. Bill is full-time Minister of Music in a church in Hartford. The Gables have two sons, Gordon, 5 and Richard 3, . . . Born to Mr. and Mrs. John T. Spicknall (Virginia Hale, '52) a son on May 24.

1950

Mr. and Mrs. Donald Reddick (Ruth Marsden) are living at 8040 Marquette Ave., in Chicago. Ruth's husband is the Associate Boy's Secretary at the South Chicago YMCA. William M. Monroe is in the Accounting Dept. of Bell Telephone in Philadelphia and is living at 245 Meadow Drive, Haddonfield, N.J. . . Charles L. Hammer, Jr., is now an M.D. at present with the USAF overseas. . . Married: Mildred Swank and Edward L. Flickinger Aug. 25. Ed received his Master of Education degree from the U. of Pittsburgh and is teaching in Montgomery County. . . Cliff Pfaff has been directing plays for the Hanover Community Players. . . Engaged: Dorothy Anne Alexander to Harmon Charles Bickley of New York. . . Married: Anne Marie Rouchard to Charles Gorschuch Kidd on June 30. . . Dorothy M. Shindler is one of five Maryland teachers who travelled to Great Britain this year on an exchange with teachers from the United Kingdom. . . Eugene J. Frank (Kathryn Beatrice Gibbs, ex-'52) received his Master of Letters degree in Finance from the Univ. of Pittsburgh in June. . . Dr. William Dvorine, M.D., is Ship Surgeon aboard the SS Santa Luisa, Grace Line. . . Born to Rev. and Mrs. Edw. H. Wright (Libby Schubert), 2320 Frederick St., Arlington, Va. . . Mr. and Mrs. Vanson Hale (Lida Birdsall, ex-'52) are now living in Youngstown, Ohio, where Vance is district manager for Remington Rand, Inc. They have three children, Virginia Lee, Debbie and Bill. . . Married: Betty Joyce Saylor, ex-'50 and 1st Lt. Robert Warren Gillotti, UMC, on June 9, in Baltimore. . . Mr. and Mrs. Robert Wayne Richardson (Ella M. Edwards) are living in Cody, Wyo., where Bob is a high school history teacher. They have a baby girl, Linda Lee.

1951

Phyllis Cromwell is living in Washington, D. C. and teaching first grade at West Pleasant, Md. . . Mr. and Mrs. John B. Fritz (Mary Ellen Hess) are living at 5010 14th St., N.W. in Washington. Jack received his M.A. in History from the U. of Colo., recently and is working with the Navy Dept. The Hesses have two children: Jerry Lee, four and William Carter, one. . . Married: Charlotte Janney and Carl W. Mellett on April 9, 1950. They are living in Towson, Md. . . Charlotte is studying Physical Education in the high school. . . 1st Lt. Brady L. Kunkle is a member of the Army's Armor Training Center at Fort Knox and aide-de-camp to the commanding general. . . Born to Mr. and Mrs. James E. Culhane (Alice Gattens) a son, James E. Jr., on May 24; they have a daughter, Connie, three. . . Born to Mr. and Mrs. Stephen J. Covey (Betty White), 2000 Andrew White Rd., Towson, Md. . . 1st Lt. Fred and Mrs. J. (Marian Benton) was married two years ago and is living at 7310 W. 82nd St., Los Angeles. She has a baby son, Jeffrey Charles. . . Peggy Kerns is teaching at Garrison Forest School For Girls, Garrison, Md.

1952

Lionel B. Lee, M.D. has been licensed to practice medicine and surgery in Maryland. . . 1st Lt. Marvin E. Siegel is stationed at Ft. McClellan, Ala. . . Donald Makosky has returned from Germany where he was teaching at the University of Mrs. John Moleworth (Nancy Walker) twin daughters, Janet Ann and Jean Lee in September. Jack is teaching at Westminster H.S. . . Born to Mr. and Mrs. Philip Royer, Jr., ex-'52, a son, Eugene Will on April 27, in Greeley, Colo. . . Born to Mr. and Mrs. William B. Marks, ex-'52 (Sarah Griffin) a daughter, Julia Elizabeth in August. . . Mike Kitchner received his Ph.D. degree at Rutgers recently. . . Sonia de Silva is working in Home Economics at Purdue; she visited the campus in August. . . Ira Zepp (Mary E. Dodd, '49) was ordained an Elder in the Methodist Church in June and received full membership in the Baltimore Annual Conference. He and Mary and sons, Alan are living at 6 Comlation Springs Ave., Edinburgh 10, Scotland. Ira is studying Protestant Theology at New College. . . Married: Ann Lee Parks, ex-'52 and 1st Lt. Joseph Makovitch, Ann is teaching Math at Westminster H.S., while "Vic" is teaching at Taneytown H.S. and assisted Charlie Havens with football in the fall and is coaching wrestling here. . . Mr. and Mrs. Lymene Easton (Ann Holmes, ex-'54) are living in Catonsville; "Bud" is working for Montgomery Ward. . . Jim Sullivan writes from Mather AFB that he is planning to enter Harvard's Graduate School of Design to study architecture.

1953

Married: Linda Gay Gauer, ex-'58 and William James Dix 3rd on Sept. 22. . . Married: Virginia Ellen Bond and Travis Cleary on August 12. . . Engaged: Betty Ann and Lloyd John Barnes are engaged to be married in the Marine Corps; a June wedding is planned. . . Born to Mr. and Mrs. Chester J. Dumas (Mary Lou Pardum) a son, David Alan on June 21. . . 1st Lt. Robert E. Boyle is in army aviation, he was assigned to the Air Section of Fort Stewart, Ga. . . Born to Mr. and Mrs. Theodore Samakouris (Esther Rice, '52) a second daughter, Deborah Clare on Aug. 10. . . Ted and Lietta Joseph are air and hydraulic electricians with A. L. Hacker Co., in Baltimore. . . Born to Mr. and Mrs. Donald Chesser (Nancy Kroll) a daughter, Robin Lynn on April 30. . . Born to Mr. and Mrs. Arthur Saltmarsh (Betty Louise Herbert) a daughter, Sharon

Louise on Sept. 9. . . Born to Mr. and Mrs. Kenneth Witmer (Pat Spessard, ex-'53) a daughter, Diane Marie on Oct. 4. . . Nancy L. Welch, ex-'53, is living in Pleasant Lake, Ind.

1954

Born to Mr. and Mrs. Weldon N. Reed a son on Sept. 28. . . Married: Barbara Grace Almond and Arthur McNeely Bassall, Jr., on Sept. 9, in Baltimore. . . Engaged: Mary Carroll Bressell, ex-'54 to Clifton H. Mathews. . . Married: Betsy Ann Bowen, '55 and Patrick L. Rogan, Jr. on Aug. 18, in Saginaw, Mich. . . Married: Barbara Louise Theobald, ex-'54 to Dr. Marcello da Costa Lima of Brazil on August 4, in Gaitersburg. . . Mrs. Frank Mate, Jr. (Margaret Holt) is teaching in the Kenmore Public School System, N.Y. and living at 21 New Somerset Rd., Buffalo. . . Married: Mary Jane Munson and Norman H. Lee on April 21. They are living at 93 Adams St., N. Abington, Mass. . . 2nd Lt. Lou Folger, '55 (Nancy Bayless) now in Korea will return to the State in Sept. of '57. Nancy is teaching in Carroll County. . . Lt. and Mrs. J. William Schneider, Jr. (EmaLew Downs, '53) are living in Columbus, Ga. "Bill" is an instructor at Fort Benning. They have a son, Douglas Scott, born in October. . . Born to Mr. and Mrs. Richard Clandienel, ex-'54 (Charlotte Bonnevill, '53) a daughter, Denise Lee on Aug. 31. . . Married: Meryl Manchee, ex-'54, and William H. Valar, Jr., on Nov. 26. They are living at 250 Fairmount Rd., Ridgewood, N. J. . . William Harry Crawford received his M.S. degree in Industrial Psychology at N.C. State College and is now working toward his Ph.D. at Lehigh. . . Donald E. Chambers is a welder in the U.S. Navy. He is a price specialist; is living at 10 W. 61st St., N.Y.C. . . Married: Margaret Elizabeth King and Lee Fairfax Casel, ex-'54 on Sept. 15. They are living at 115 Lehigh, Natickville, Tenn. . . Donald Erb is with the U.S. Atomic Energy Commission in the Reactor Development Div. . . Donald D. Haut a student at Temple Univ. Medical Sch. was co-author of a paper recently published in the Journal of Medical Sciences, "Qualifications of the Manifestations of Rheumatoid Arthritis." The author was John Lansbury, M.D., professor of clinical medicine at Temple Univ. and Mrs. Tom Douglas. . . Betty Phillips is now in London where Tom is in Army Intelligence work. . . Married: Dorothy Jay Redsecker, ex-'54 and Raymond Jay Cadmus on May 12. They are living in Clifton, N.J. . . Engaged: Lois Ann Cernak to Charles D. Runstedt. . . Born to Mr. and Mrs. J. David Reid (Etta Sano) their second child, Nicholas Masami (Righteousness and Beauty) on Nov. 14. They are living at 10 Kirkland Rd., Cambridge, Mass. . . Mr. and Mrs. Edward E. Parker (Shirley Woodruff) are living in Columbus, Ohio. . . Dr. Tallahassee, Fla. "Ed" is a student in Classics at Florida State Univ. They have a baby boy.

1955

Married: Margaret Jean Artiglian, '56 and Thomas S. Englar in August. . . Born to Mr. and Mrs. Fred P. Haehnlen a son, Timothy Peter, '56 on Aug. 26 in a hospital near New Haven. . . Married: Joan Virginia Hargrave and 1st Lt. Fred W. Clinton Tull on June 23, at Valley Forge. . . Born to 2d Lt. and Mrs. Samuel L. Mann (Joan Halter, ex-'57) a son, Timothy Michael on Sept. 8. . . Married: Martha Anne Kobout, ex-'55 and Charles Louis Sill in September. . . Charles H. Clarke, Jr., is attending the Chandler School of Theology of Emory University in Atlanta, Ga. (Received to late for the Annual Living Endowment Fund Report)—The following were Class Agents for 1955—Sue Dorsey Batista, Pat Hamnerly, Mary Stuart, Carol Coleman, and Mary Lee Younger. . . Born to Mr. and Mrs. Rodney Davidson (Gretchen Pierson) a daughter, Kyle Renee on May 12. . . Married: Betsy Jones, ex-'55 and Byron Gene Maddox on Aug. 10. . . Born to Lt. (jg) and Mrs. John E. Wells (Mary-Jo Hazen, ex-'55) a son, Joseph William on Sept. 16, in Evansville, Ind. . . Married: Corey Whitehurst is teaching 7th grade Core and Math at Aberdeen H.S., '24 Lt. Donald E. Jones is a platoon leader with the 24th Infantry Division. "Ron" played basketball for the U.S. Army basketball team in Korea. . . Jack and Doreen McNeil Snover are living in W. Fayette, Ind., while Jack is in his second year of graduate work at Purdue. . . Jerry Granda is studying at Boston Univ. School of Theology. . . Alex Kuprijanov, ex-'55 and Alex Kuprijanov. They are living at 16 Cottage Court, Huntington Station, L.I.N.Y. . . Married: Phyllis Combe, ex-'55 and John B. Gillette on June 11. They are living in Medford, N.J. . . Ann-Marie Summers is doing graduate work and teaching in music at Indiana University. . . Married: Ethel Yohs Larson, ex-'55 and Peter Pine. . . Lt. Edward P. Smith with the 2nd Division in Alamo, Korea. . . Lt. and Mrs. (as low as 40 degrees below zero) but is enjoying skiing and TV. "Eddie" was recently placed in charge of an Honor Squad.

1956

Married: Emma Marie Uppere, and George Leon Douglas on June 29 in Westminster. . . Married: Shelley Ann Myers, '55 and Hans Gerhard Willen on June 10, in Westminster. . . Married: Eleanor G. Wanshan, Hull and John B. Ness on Aug. 5. . . Married: Shirley Mae Goates and Donald E. Galt on Aug. 19 in Cambridge. . . Married: Helen Jane Williams and Robert E. Funk in August. . . Charles R. Conover is working for E. L. DuPont de Nemours at the New Castle, Del. plant and living in New Castle. . . Married: Sharon Elaine Ebaugh and William A. Ward on Aug. 18. They are living in Gettysburg. . . Engaged: Caroline Baker and George J. Morgan of Jimenez, Pa., who is a student of law at Temple Univ. . . Leola Hamblin is teaching at Garrison Forest School. . . Mary Susannah Hargett is working in the Campus and Advisory Service of Woodward and Lothrop in Washington.